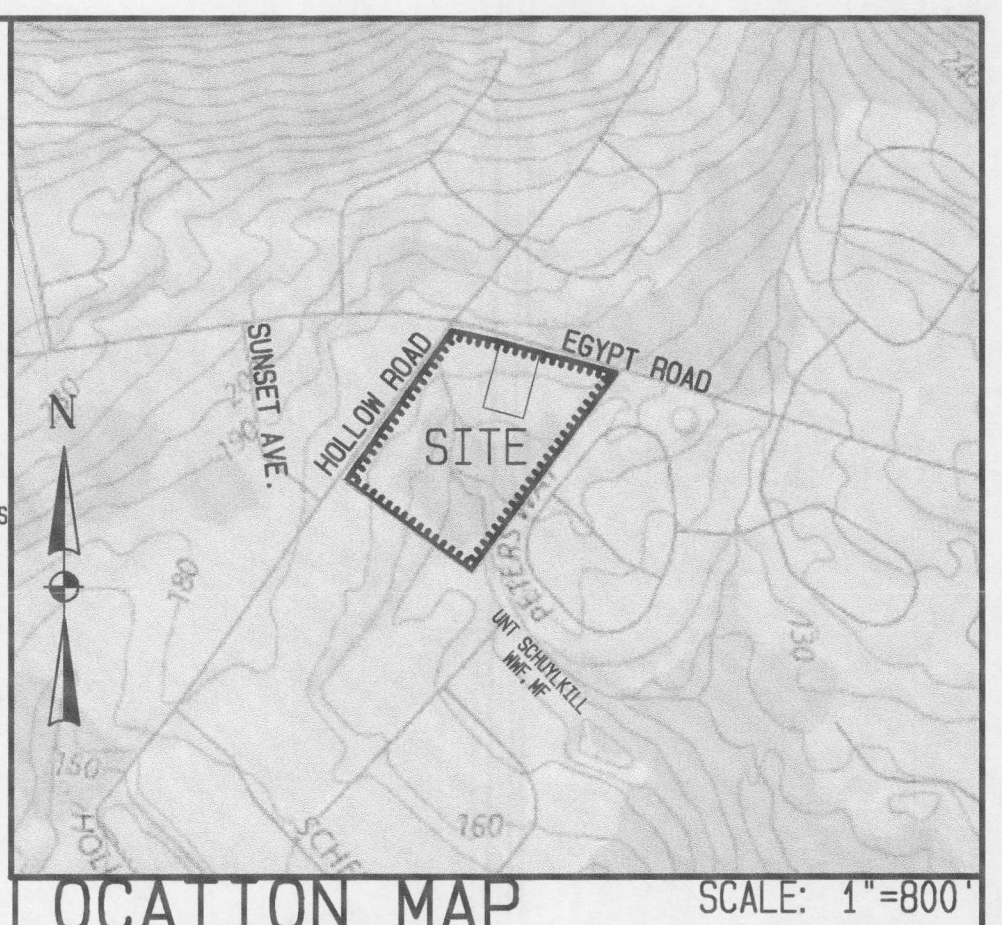
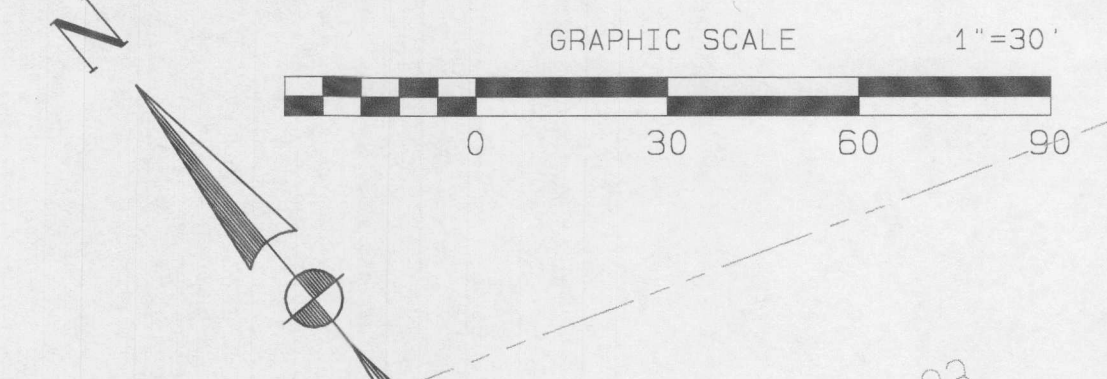
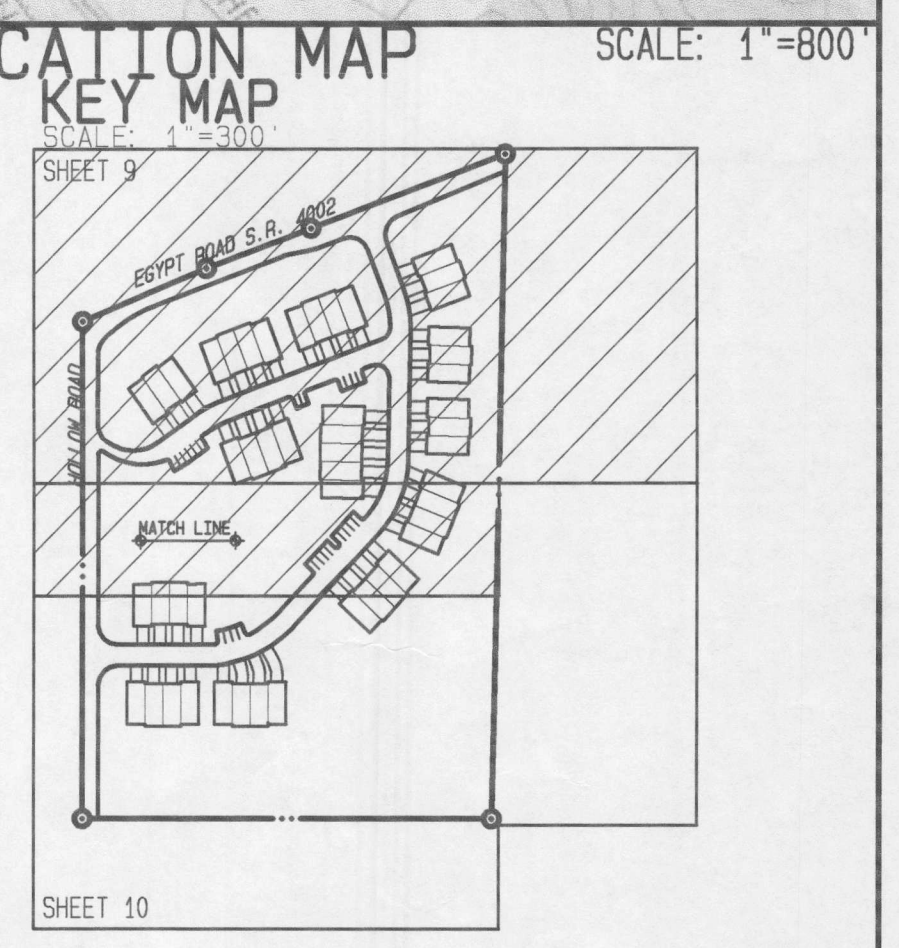


REV	DATE	DESCRIPTION
#16	7-28-19	PER GILMORE & ASSOC. REVIEW OF 4-15-19
#15	4-24-19	PER GILMORE & ASSOC. REVIEW OF 1-15-19
#14	1-23-19	PER GILMORE & ASSOC. REVIEW OF 1-15-19
#13	12-20-18	PER GILMORE & ASSOC. REVIEW OF 12-19-18
#12	12-19-18	PER GILMORE & ASSOC. REVIEW OF 9-26-18
#11	12-19-18	PER GILMORE & ASSOC. REVIEW OF 9-26-18
#10	12-19-18	PER GILMORE & ASSOC. REVIEW OF 9-26-18
#9	12-19-18	PER GILMORE & ASSOC. REVIEW OF 9-26-18
#8	12-19-18	PER GILMORE & ASSOC. REVIEW OF 9-26-18
#7	12-19-18	PER GILMORE & ASSOC. REVIEW OF 9-26-18
#6	12-19-18	PER GILMORE & ASSOC. REVIEW OF 9-26-18
#5	12-19-18	PER GILMORE & ASSOC. REVIEW OF 9-26-18
#4	12-19-18	PER GILMORE & ASSOC. REVIEW OF 9-26-18
#3	12-19-18	PER GILMORE & ASSOC. REVIEW OF 9-26-18
#2	12-19-18	PER GILMORE & ASSOC. REVIEW OF 9-26-18
#1	12-19-18	PER GILMORE & ASSOC. REVIEW OF 9-26-18



- ### LEGEND
- CATCH BASIN (C.B.)
  - SANITARY OR STORM MANHOLE
  - WATER VALVE CAP
  - LIGHT POLE
  - FIRE HYDRANT
  - CLEAN OUT/VENT (C.O.)
  - UTILITY POLE W/GUY WIRE
  - TRAFFIC SIGNAL POLE
  - ELECTRIC BOX
  - GAS VALVE
  - GAS METER
  - STREET SIGN (AS NOTED)
  - EXISTING TREES
  - EXISTING WOODS LINE
  - PROPOSED WOODS LINE
  - EXISTING STREAM CENTERLINE
  - ULTIMATE RIGHT-OF-WAY
  - EXIST. INDEX CONTOURS
  - PROPOSED INDEX CONTOURS
  - EXIST. WATER LINE
  - PROPOSED WATER SERVICE LINE
  - EXIST. SANITARY SEWER LINE
  - PROPOSED SANITARY SEWER LINE
  - EXIST. STORM SEWER LINE
  - PROPOSED STORM SEWER LINE
  - EXIST. WATER SERVICE LINE
  - PROPOSED WATER SERVICE LINE
  - EXIST. FENCE LINE
  - PROPOSED SANITARY SEWER
  - PROPOSED SANITARY LATERAL
  - PROPOSED WATER LINE
  - PROPOSED STORM WATER PIPE
  - PROPOSED ROOF LEADER
  - SOIL BOUNDARY
  - NPDES BOUNDARY
  - LIMIT OF DISTURBANCE
  - EXISTING BUILDING
  - PROPOSED BUILDING
  - CENTELINE OF EXISTING STREAM
  - PROPOSED ENDWALL W/ RIPRAP
  - AMENDED SOILS
  - WASHED SAND @ BASIN BOTTOM



### PLANTING SCHEDULE

BOTANICAL NAME	COMMON NAME	PLANTING SIZE	HT. RANGE AT MATURITY	WD. RANGE AT MATURITY	MIN. SPACING AT PLANTING	COMMENTS	TOTAL PROPOSED	
<b>SHADE OR CANOPY TREES FOR STREET TREES AND/OR BUFFERS</b>								
AS	ACER SACCHARUM	SUGAR MAPLE	2 1/2' C.	7'5"	40'-60'	STRAIGHT TRUNK FULL HEAD, B & B	29	
AR	ACER RUBRUM	RED MAPLE	2 1/2' C.	50'-60'	35'-45'	STRAIGHT TRUNK FULL HEAD, B & B	25	
QB	QUERCUS BICOLOR	SWAMP WHITE OAK	2 1/2' C.	50'-60'	40'-60'	STRAIGHT TRUNK FULL HEAD, B & B	25	
<b>EVERGREEN TREES FOR PROPERTY LINE BUFFERS</b>								
AC	ABIES CONCOLOR	WHITE FIR	6' HT.	40'-50'	15'-25'	12'	B & B	21
PS	PINUS STROBUS	EASTERN WHITE PINE	6' HT.	40'-50'	15'-25'	12'	B & B	20
PA	PICEA ABIES	NORWAY SPRUCE	6' HT.	40'-50'	15'-25'	12'	B & B	18
<b>SHRUBS</b>								
IV	ILEX VERTICILLATA	WINTERBERRY	3' HT.	6'-10'	6'-10'	3'	B & B	23
IG	ILEX GLABRA	INKBERRY	3' HT.	6'-10'	6'-10'	3'	B & B	24

- ### CRITICAL STAGES
- SOME CRITICAL STAGES OF BMP INSTALLATION WILL REQUIRE OVERSIGHT BY A LICENSED PROFESSIONAL. LICENSED PROFESSIONALS ARE PROFESSIONAL ENGINEERS, LANDSCAPE ARCHITECTS, GEOLOGIST AND LAND SURVEYORS LICENSED TO PRACTICE IN THIS COMMONWEALTH.
- A LICENSED PROFESSIONAL OR HIS DESIGNEE MUST BE ON-SITE TO OVERSEE:
    - SEDIMENT TRAP BERM CONSTRUCTION AND OUTLET PIPE INSTALLATION.
    - SOIL AMENDMENT/RESTORATION ACTIVITIES.
    - THE CONVERSION OF THE SEDIMENT TRAP TO INFILTRATION BASINS.
    - THE CONSTRUCTION OF THE VEGETATED SWALE.
    - THE CONVERSION OF THE SEDIMENT TRAP TO RAIN GARDEN.
    - THE CONSTRUCTION OF THE RAIN GARDENS.
    - PLACEMENT OF THE SNOUTS IN CATCH BASINS.

- ### LANDSCAPING NOTES:
- ALL BEDS SHALL HAVE THREE INCHES OF SHREDED HARDWOOD MULCH OR EQUAL.
  - TREE WRAP SHALL BE REMOVED AT THE END OF THE GUARANTEE PERIOD.
  - DO NOT CUT THE LEADER OF DECIDUOUS TREES.
  - NO DECIDUOUS SHADE TREES WILL BE LOCATED CLOSER THAN 10 FEET TO SANITARY AND WATER UTILITIES.
  - NO PLANTS, EXCEPT GRASS, SHALL BE PLANTED LESS THAN FIVE FEET FROM A STRUCTURE, WALKS OR CURB LINES.
  - ALL PLANT MATERIALS SHALL BE OF NURSERY STOCK, BALLED AND BURLAPPED. IT SHALL BE OF SYMMETRICAL GROWTH. TYPICAL OF ITS SPECIES OR VARIETY, CERTIFIED FREE OF INSECTS, PESTS AND DISEASE, HAVE A NORMAL GROWTH HABIT, AND A VIGOROUS HEALTHY ROOT SYSTEM.
  - ALL PLANT MATERIAL SHALL BE GUARANTEED FOR A PERIOD OF 18 MONTHS IN THE SAME MANNER AS OTHER REQUIRED IMPROVEMENTS, ACCORDING TO § 154-502 OF THIS CHAPTER.
  - ALL PLANTING MATERIALS SHALL MEET THE MINIMUM STANDARDS OF THE MOST RECENT EDITION OF THE AMERICAN STANDARD FOR NURSERY STOCK BY THE AMERICAN NURSERY AND LANDSCAPE ASSOCIATION FOR HEALTH, FORM, AND ROOT CONDITION.
  - ALL TREES AND SHRUBS SHALL HAVE BEEN GROWN UNDER CLIMATIC CONDITIONS SIMILAR TO THOSE IN THE TOWNSHIP.
  - PLANT MATERIAL SHALL NOT BE PLANTED UNTIL THE FINISHED GRADING HAS BEEN COMPLETED.
  - TREES AND SHRUBS SHALL BEAR THE SAME RELATIONSHIP TO THE FINISHED GRADE IN THE NEW DEVELOPMENT AS THEY DID IN THE NURSERY.
  - THE LANDSCAPE CONTRACTOR SHALL PROVIDE ALL PLANT MATERIALS AS SPECIFIED IN THE PLANT SCHEDULE AND SHALL INSTALL ALL MATERIAL IN ACCORDANCE WITH THE PLANTING DETAILS, NOTES AND SPECIFICATIONS IN THE APPROVED LANDSCAPE PLANS.
  - ANY SUBSTITUTIONS OF PLANT MATERIALS MUST BE REVIEWED AND APPROVED BY THE TOWNSHIP BEFORE INSTALLATION.
  - IT SHALL BE THE RESPONSIBILITY OF THE DEVELOPER TO ADEQUATELY AND PROPERLY MAINTAIN THE LANDSCAPE AREAS, INCLUDING WATERING, FERTILIZING TO MAINTAIN HEALTHY GROWTH, PRUNING, WEEDING, AND CLEANING DEBRIS PRIOR TO THE END OF THE GUARANTEE PERIOD.

**NPDES APPLICANT**  
 615 EGYPT ROAD, LP  
 1030 WEST GERMANTOWN PIKE  
 EAST NORRITON, PA 19403  
 PH: (610) 539-4700

USE ERNMX-126 IN RAINGARDEN #2 AND #3 AND ERNMX-126 IN VEGETATED SWALE #1

SITUATE IN:  
 UPPER PROVIDENCE TWP  
 MONTGOMERY COUNTY,  
 PENNSYLVANIA



3-9-15  
 #0682018

## PCSM LANDSCAPING PLAN

### 615 EGYPT ROAD

**Ludgate Engineering Corporation**  
 ENGINEERS SURVEYORS PLANNERS  
 ENVIRONMENTAL SCIENTISTS  
 © 2019

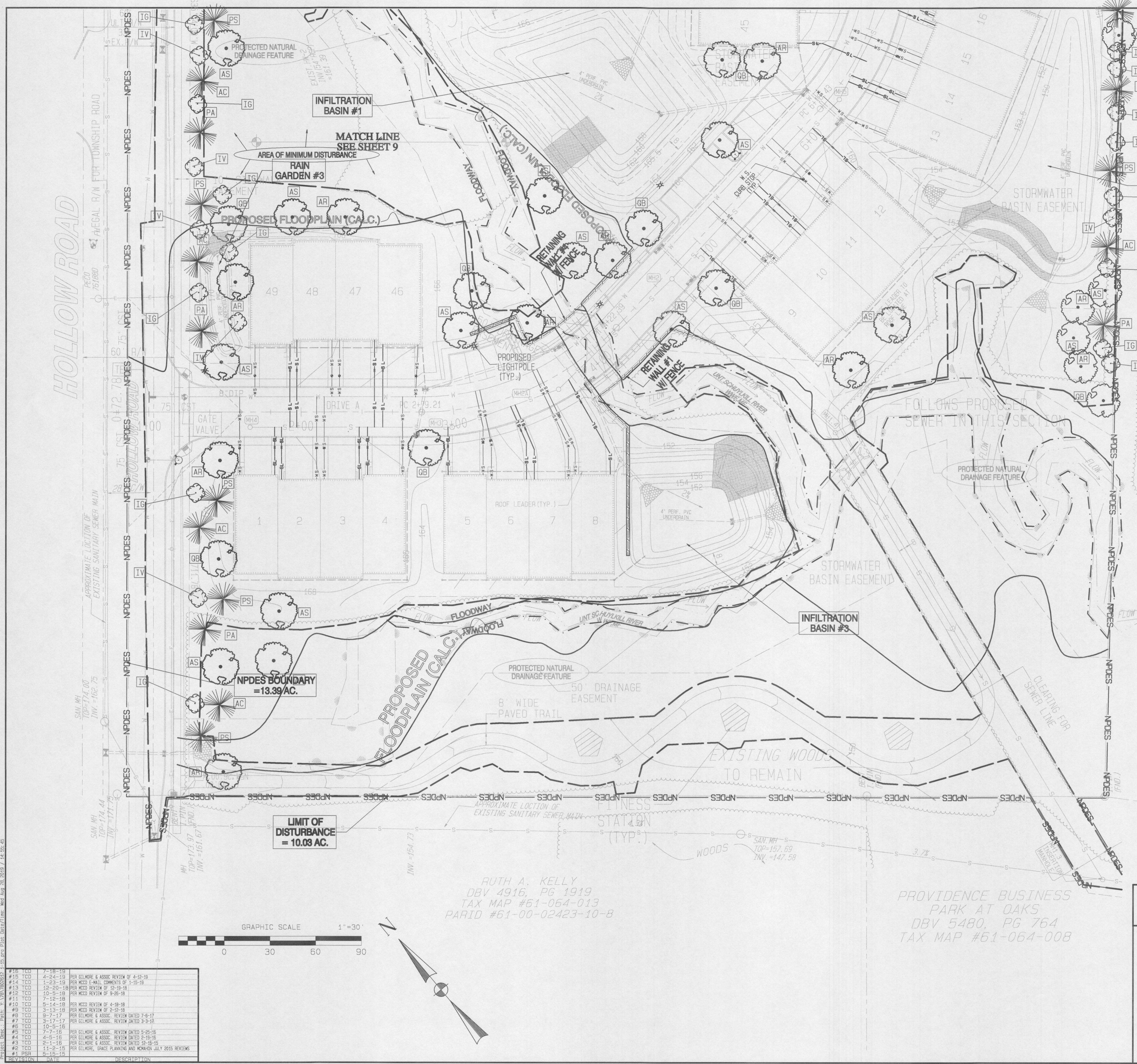
LINCOLN CORPORATE CENTER  
 10 VANGUARD DRIVE, SUITE 90  
 READING, PA. 19606  
 PHONE: 610/404-7330 | FAX: 610/404-7371  
 www.ludgate-eng.com

DATE	BY	DESCRIPTION	DATE	DESCRIPTION
7-31-14	TCD	COMP (END)	PA ONE	COMPUTER FILE
7-31-14	TCD	COMP (LOT)	CALL DATE	P: 7802612 1-15.PRO
1"-30"	TAX MAP PARCEL	DRAWING NUMBER		



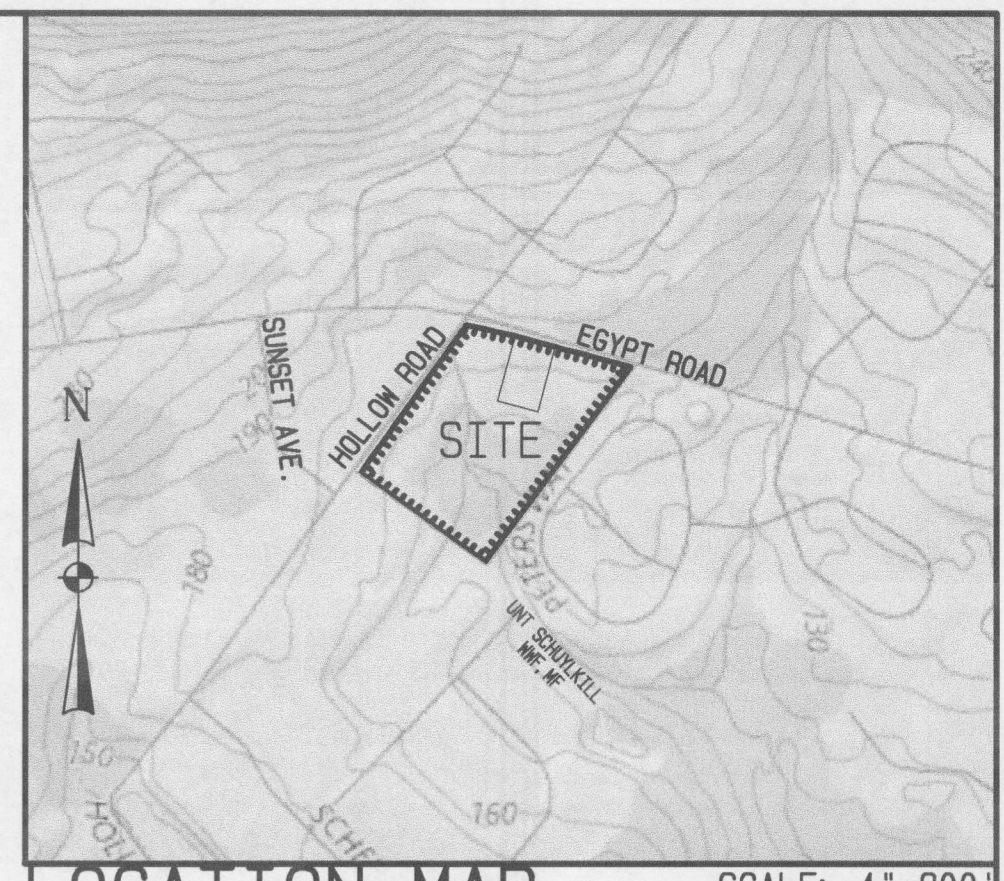
PROJECT: 615 EGYPT ROAD, LP  
 DATE: 3-9-15  
 DRAWN BY: TCD  
 CHECKED BY: TCD  
 PROJECT NO: 0682018





### LEGEND

- CATCH BASIN (C.B.)
- SANITARY OR STORM MANHOLE
- WATER VALVE CAP
- LIGHT POLE
- FIRE HYDRANT
- CLEAN OUT/VENT (C.O.)
- UTILITY POLE W/40' WIRE
- TRAFFIC BOX
- TRAFFIC SIGNAL POLE
- ELECTRIC BOX
- GAS VALVE
- GAS METER
- STREET SIGN (AS NOTED)
- EXISTING TREES
- EXISTING WOODS LINE
- PROPOSED WOODS LINE
- EXISTING STREAM CENTERLINE
- EXISTING STREAM CENTERLINE (500)
- EXISTING CONTOUR (500)
- EXISTING CONTOUR (500)
- PROPOSED CONTOUR
- PROPOSED CONTOUR
- PROPOSED CONTOUR
- PROPOSED CONTOUR
- EXIST. SANITARY SEWER LINE
- PROPOSED SANITARY SEWER LINE
- EXIST. SANITARY LATERAL
- PROPOSED SANITARY LATERAL
- PROPOSED WATER SERVICE
- PROPOSED STORM WATER PIPE
- PROPOSED ROOF LEADER
- ORANGE CONSTRUCTION FENCE
- NPDES BOUNDARY
- LIMIT OF DISTURBANCE
- EXISTING BUILDING
- PROPOSED BUILDING
- CENTERLINE OF EXISTING STREAM
- PROPOSED ENDWALL W/ RIPRAP
- AMENDED SOILS
- WASHED SAND @ BASIN BOTTOM



- ### CRITICAL STAGES
- SOME CRITICAL STAGES OF S/WP INSTALLATION WILL REQUIRE OVERSIGHT BY A LICENSED PROFESSIONAL. LICENSED PROFESSIONALS ARE PROFESSIONAL ENGINEERS, LANDSCAPE ARCHITECTS, GEOLOGIST & LAND SURVEYORS LICENSED TO PRACTICE IN THIS COMMONWEALTH.
- A LICENSED PROFESSIONAL OR HIS DESIGNEE MUST BE ON-SITE TO OVERSEE:
- SEDIMENT TRAP BERM CONSTRUCTION AND OUTLET PIPE INSTALLATION.
  - SOIL AMENDMENT/RESTORATION ACTIVITIES.
  - THE CONVERSION OF THE SEDIMENT TRAPS TO INFILTRATION BASINS.
  - THE CONVERSION OF THE SEDIMENT TRAP TO RAIN GARDEN.
  - THE CONSTRUCTION OF THE RAIN GARDENS.
  - PLACEMENT OF THE SIGNS IN CATCH BASINS.

### PLANTING SCHEDULE

BOTANICAL NAME	COMMON NAME	PLANTING SIZE	HT. RANGE AT MATURITY	WD. RANGE AT MATURITY	MIN. SPACING AT PLANTING	COMMENTS	TOTAL PROPOSED	
<b>SHADE OR CANDIDY TREES FOR STREET TREES AND/OR BUFFERS</b>								
AS	ACER SACCHARUM	SUGAR MAPLE	2 1/2" C.	75'	40'-60'	25'	STRAIGHT TRUNK FULL HEAD, B & B	29
AR	ACER RUBRUM	RED MAPLE	2 1/2" C.	50'-60'	35'-45'	25'	STRAIGHT TRUNK FULL HEAD, B & B	25
QB	QUERCUS BICOLOR	SWAMP WHITE OAK	2 1/2" C.	50'-60'	40'-60'	25'	STRAIGHT TRUNK FULL HEAD, B & B	25
<b>EVERGREEN TREES FOR PROPERTY LINE BUFFERS</b>								
AC	ABIES CONCOLOR	WHITE FIR	6' HT.	40'-50'	15'-25'	12'	B & B	21
PS	PINUS STROBUS	EASTERN WHITE PINE	6' HT.	40'-50'	15'-25'	12'	B & B	20
PA	PICEA ABIES	NORWAY SPRUCE	6' HT.	40'-50'	15'-25'	12'	B & B	18
<b>SHRUBS</b>								
TV	ILEX VERTICILLATA	WINTERBERRY	3' HT.	6'-10'	6'-10'	3'	B & B	23
IG	ILEX GLABRA	INKBERRY	3' HT.	6'-10'	6'-10'	3'	B & B	24

- ### LANDSCAPING NOTES:
- (A) ALL BEDS SHALL HAVE THREE INCHES OF SHREDED HARDWOOD MULCH OR EQUAL.
  - (B) TREE WRAP SHALL BE REMOVED AT THE END OF THE GUARANTEE PERIOD.
  - (C) DO NOT CUT THE LEADER OF DECIDUOUS TREES.
  - (D) NO DECIDUOUS SHARF TREES WILL BE LOCATED CLOSER THAN 10 FEET TO SANITARY AND WATER UTILITIES.
  - (E) NO PLANTS, EXCEPT GROUND COVER, SHALL BE PLANTED LESS THAN FIVE FEET FROM A STRUCTURE, WALKS OR CURB LINES.
  - (F) ALL PLANT MATERIALS SHALL BE OF NURSERY STOCK, BALLED AND BURLAPPED. IT SHALL BE OF SYMMETRICAL GROWTH. TYPICAL OF ITS SPECIES OR VARIETY, CERTIFIED FREE OF INSECTS, PESTS AND DISEASE, HAVE A NORMAL GROWTH HABIT, AND A VIGOROUS HEALTHY ROOT SYSTEM.
  - (G) ALL PLANT MATERIAL SHALL BE GUARANTEED FOR A PERIOD OF 18 MONTHS IN THE SAME MANNER AS OTHER REQUIRED IMPROVEMENTS, ACCORDING TO § 554-6 OF THIS CHAPTER.
  - (H) ALL PLANTING MATERIALS SHALL MEET THE MINIMUM STANDARDS OF THE MOST RECENT EDITION OF THE AMERICAN STANDARD FOR NURSERY STOCK BY THE AMERICAN NURSERY AND LANDSCAPE ASSOCIATION FOR HEALTH, FORM AND ROOT CONDITION.
  - (I) ALL TREES AND SHRUBS SHALL HAVE BEEN GROWN UNDER CLIMATIC CONDITIONS SIMILAR TO THOSE IN THE TOWNSHIP.
  - (J) PLANT MATERIAL SHALL NOT BE PLANTED UNTIL THE FINISHED GRADING HAS BEEN COMPLETED.
  - (K) TREES AND SHRUBS SHALL BEAR THE SAME RELATIONSHIP TO THE FINISHED GRADE IN THE NEW DEVELOPMENT AS THEY DID IN THE NURSERY.
  - (L) THE LANDSCAPE CONTRACTOR SHALL PROVIDE ALL PLANT MATERIALS AS SPECIFIED IN THE PLANT SCHEDULE AND SHALL INSTALL ALL MATERIAL IN ACCORDANCE WITH THE PLANTING DETAILS, NOTES AND SPECIFICATIONS IN THE APPROVED LANDSCAPE PLANS.
  - (M) ANY SUBSTITUTIONS OF PLANT MATERIALS MUST BE REVIEWED AND APPROVED BY THE TOWNSHIP BEFORE INSTALLATION.
  - (N) IT SHALL BE THE RESPONSIBILITY OF THE DEVELOPER TO ADEQUATELY AND PROPERLY MAINTAIN THE LANDSCAPE AREAS, INCLUDING WATERING, FERTILIZING TO MAINTAIN HEALTHY GROWTH, PRUNING, WEEDING, AND CLEANING DEBRIS PRIOR TO THE END OF THE GUARANTEE PERIOD.

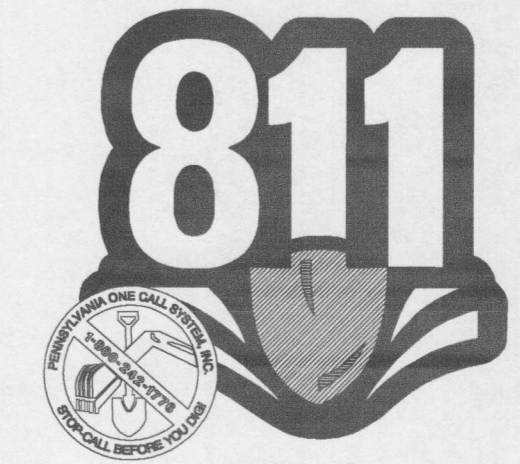
**NPDES APPLICANT**  
 615 EGYPT ROAD, LP  
 1030 WEST GERMANTOWN PIKE  
 EAST NORRITON, PA 19403  
 PH: (610) 539-4700

USE ERNMX-126 IN RAINGARDEN #2 AND #3 AND ERNMX-126 IN VEGETATED SWALE #1

RUTH A. KELLY  
 DBV 4916, PG 1919  
 TAX MAP #61-064-013  
 PARID #61-00-02423-10-B

PROVIDENCE BUSINESS  
 PARK AT OAKS  
 DBV 5480, PG 764  
 TAX MAP #61-064-008

SITUATE IN:  
 UPPER PROVIDENCE TWP  
 MONTGOMERY COUNTY,  
 PENNSYLVANIA



## PCSM LANDSCAPING PLAN

### 615 EGYPT ROAD

**Ludgate Engineering Corporation**  
 ENGINEERS SURVEYORS PLANNERS  
 ENVIRONMENTAL SCIENTISTS  
 © 2019

LINCOLN CORPORATE CENTER  
 10 VANGUARD DRIVE, SUITE 90  
 READING, PA, 19606  
 PHONE: 610/404-7330 | FAX: 610/404-7371  
 www.ludgate-eng.com

© COPYRIGHT 2019	BY			LUDGATE ENGINEERING CORPORATION
DRAWN	COMP (INDY)	COMP (LOST)	PA ONE	COMPUTER FILE
7-31-14			CALL DATE	P: 7802612 1-15-PRO
SCALE	TAX MAP PARCEL			DRAWING NUMBER
1"=30'				D-7802612 SHEET 10 of 48

REV.	DATE	DESCRIPTION
#15	7-18-19	PER GILMORE & ASSOC. REVIEW OF 4-12-19
#14	4-24-19	PER MCOE & ASSOC. REVIEW OF 4-12-19
#13	12-20-18	PER MCOE REVIEW OF 12-19-18
#12	10-5-18	PER MCOE REVIEW OF 9-28-18
#11	7-12-18	
#10	5-14-18	PER MCOE REVIEW OF 4-18-18
#9	2-23-18	PER MCOE REVIEW OF 2-12-18
#8	1-7-17	PER GILMORE & ASSOC. REVIEW DATED 7-6-17
#7	3-17-17	PER GILMORE & ASSOC. REVIEW DATED 3-3-17
#6	1-10-16	
#5	7-7-16	PER GILMORE & ASSOC. REVIEW DATED 5-25-16
#4	4-5-16	PER GILMORE & ASSOC. REVIEW DATED 2-19-16
#3	7-1-16	PER GILMORE & ASSOC. REVIEW DATED 12-16-15
#2	11-2-15	PER GILMORE, GRACE PLANNING AND NOMAN JULY 2015 REVIEWS
#1	6-15-15	