

Summary – Area Numbers on RAP Plans

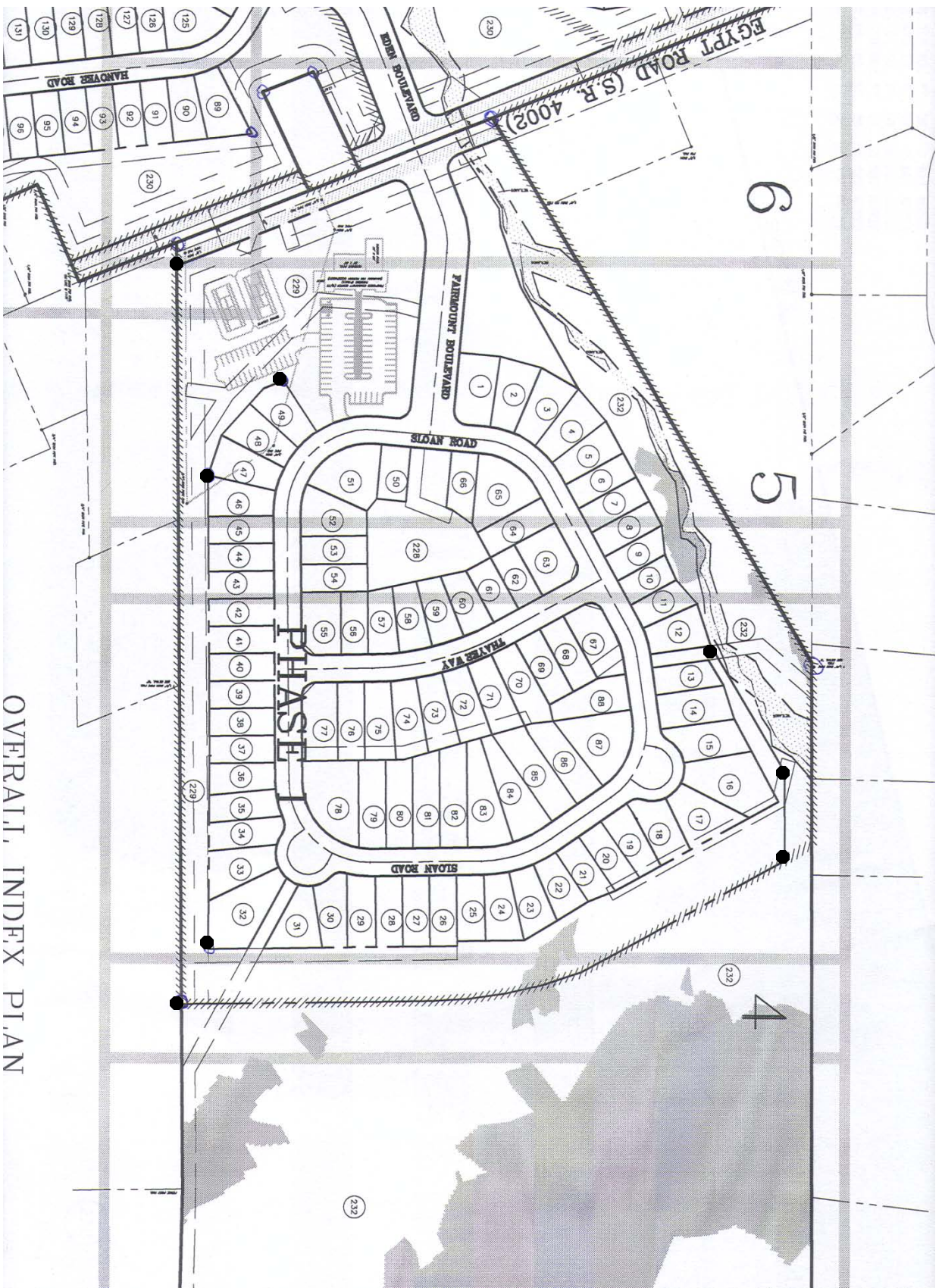
In Phases 1, 2 and 3, the areas are:

- 228 – Open space – Ours – Gazebo area
- 229 – Open space – Ours – Clubhouse area and behind homes on Sloan
- 230 – Open space – Ours – Several areas in Phases 2 and 3
- 231 – Open space – Ours – Berm area in Phase 3
- 232 – Open space dedicated to Upper Providence Twp. – Wetlands above Phase 1 pond

In Phase 4, the areas are:

- 109 – Open space – Ours – clubhouse area
- 110 – Open space – Ours
- 111 – Open space dedicated to Upper Providence Twp.
- 112 – Open space dedicated to Upper Providence Twp.
- 113 – Open space – Ours
- 114 – Open space – Ours
- 115 – Land dedicated to PennDOT for right-of-way
- 116 - Land dedicated to PennDOT for right-of-way (near Hollow Road)

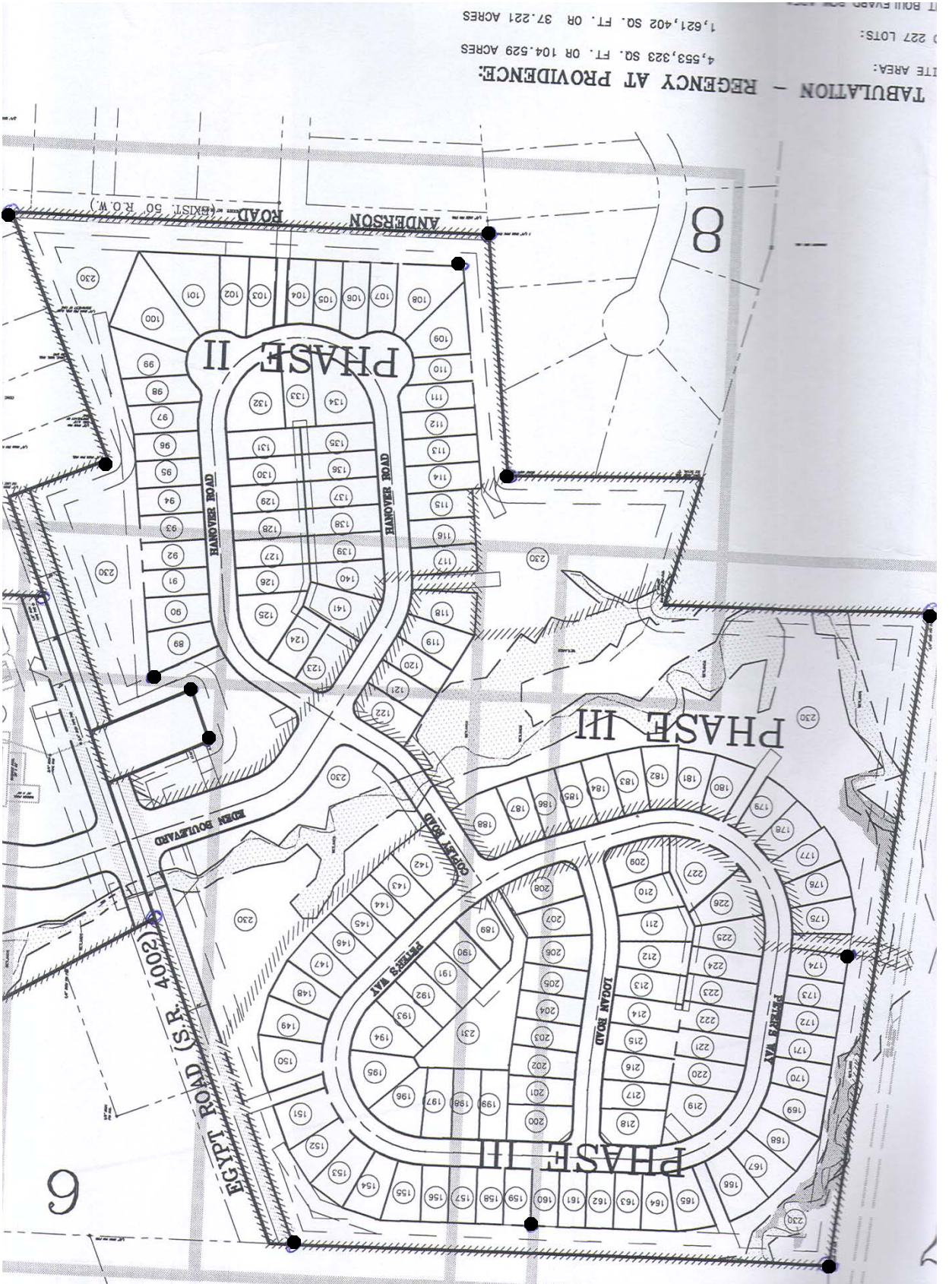
The following pages show the location of most of the areas on the plans. For info, the black dots don't appear on the official plans. I added them when we were asking Toll to place some survey stakes to assist the Board in knowing where some of the more important points are. After the stakes were placed, Rich Bergeman and I placed PVC markers at the markers we could get to. For the points that are in the woods, we placed PVC pipe markers that are about three feet high. For those points that are in someone's back yard, we used six inch long PVC pipe with caps, and drove them flush with the ground.

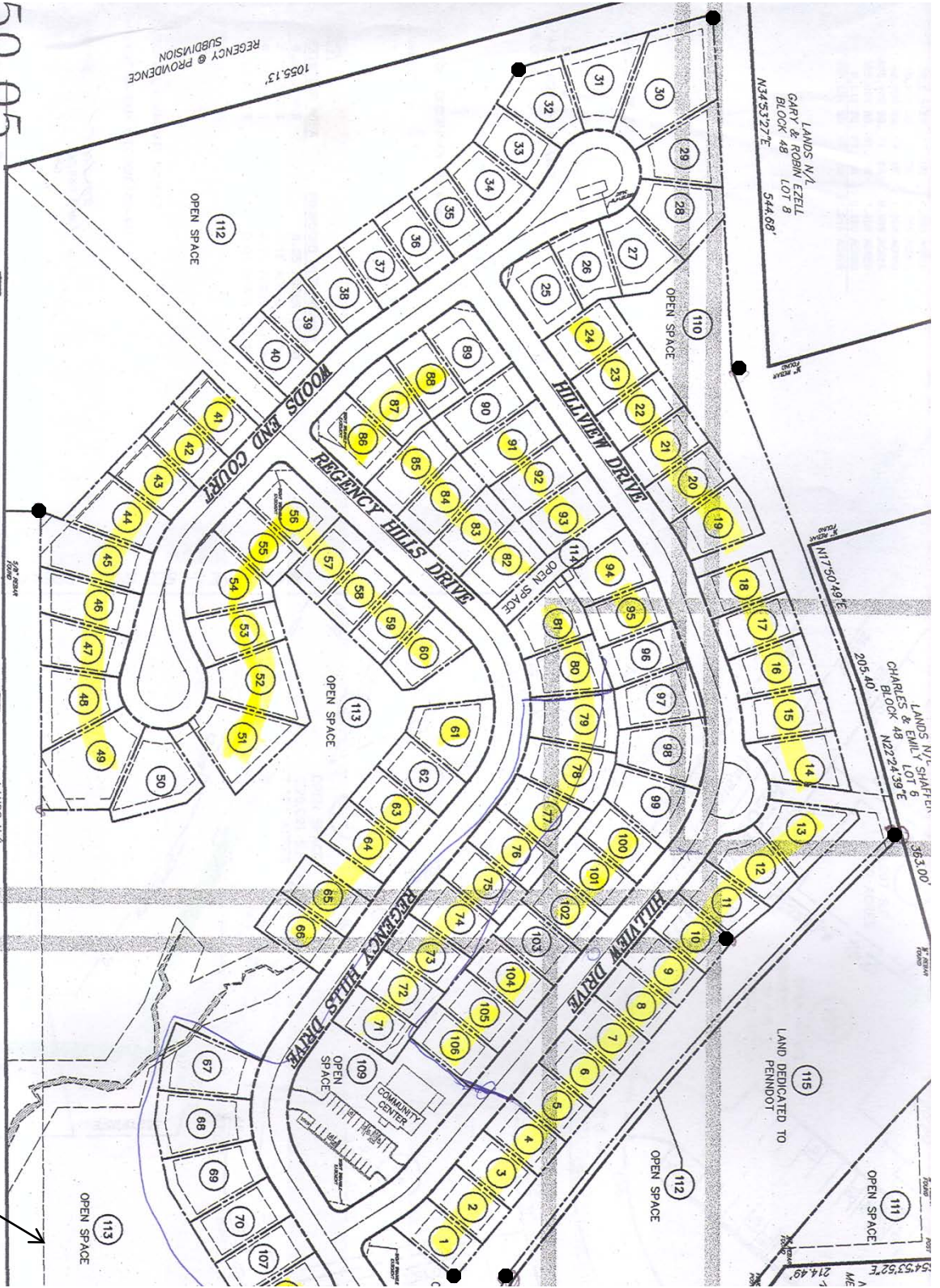


OVERALL INDEX PLAN

8 Markers

13 Markers





9 Markers

● One marker on this line close to Black Rock Road