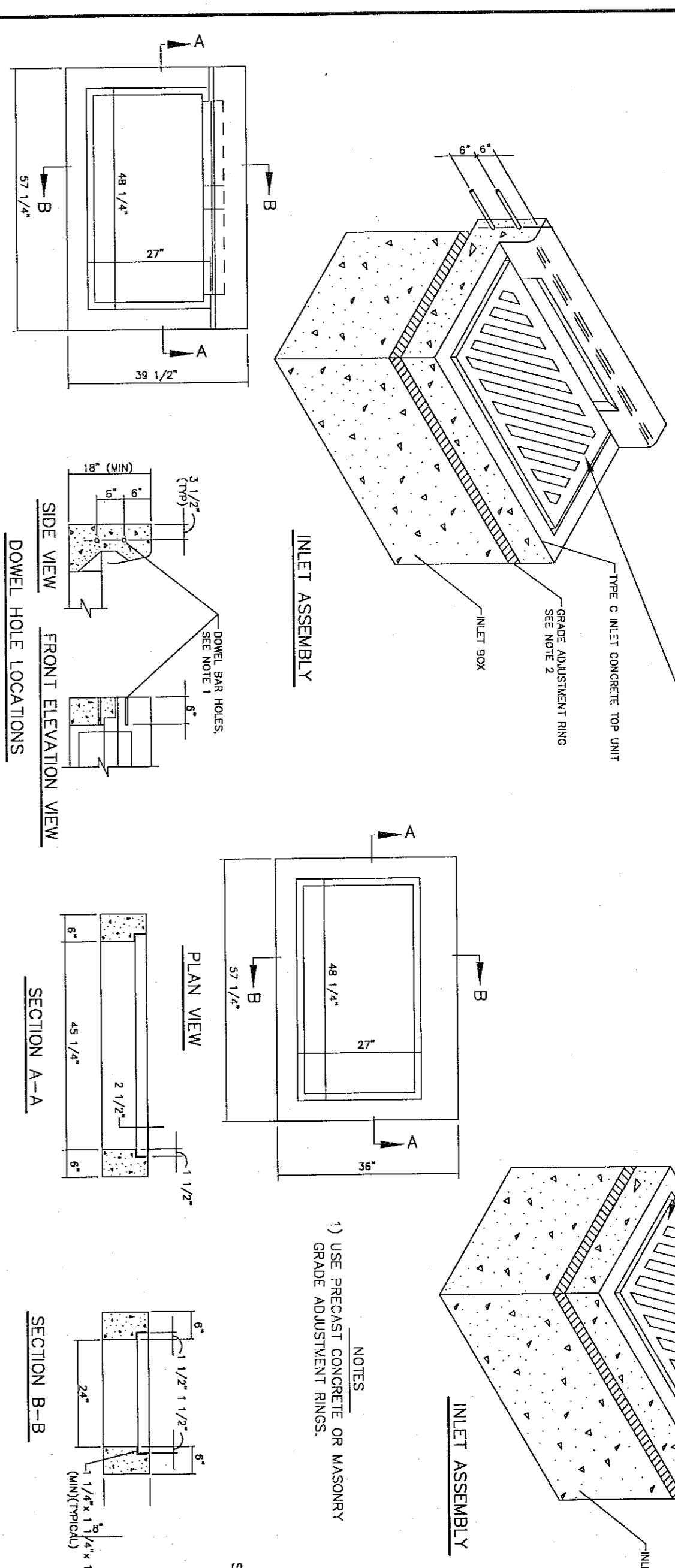
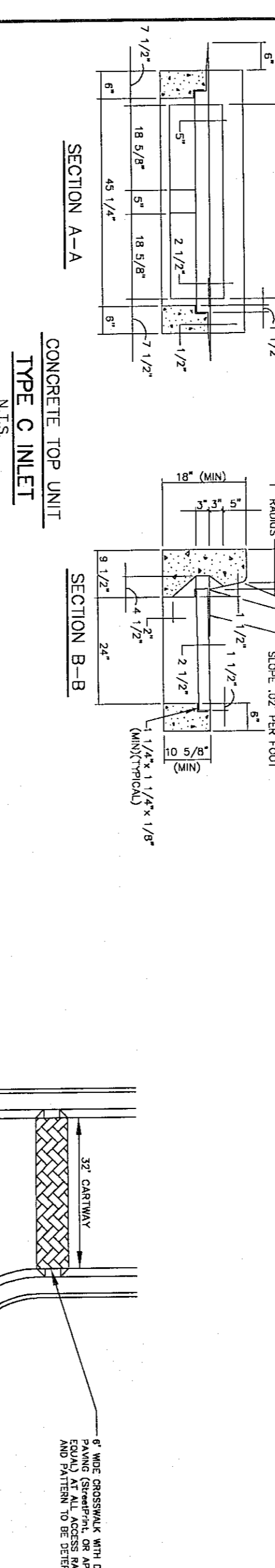


1) GOMEL INLET JOINT WITH (2) #4 x 1'-0" DOWN BARS AND PLACE 1/4" PREVEDGED EXPANSION JOINT
 2) USE PRECAST CONCRETE OR MASONRY ADJUSTMENT RINGS



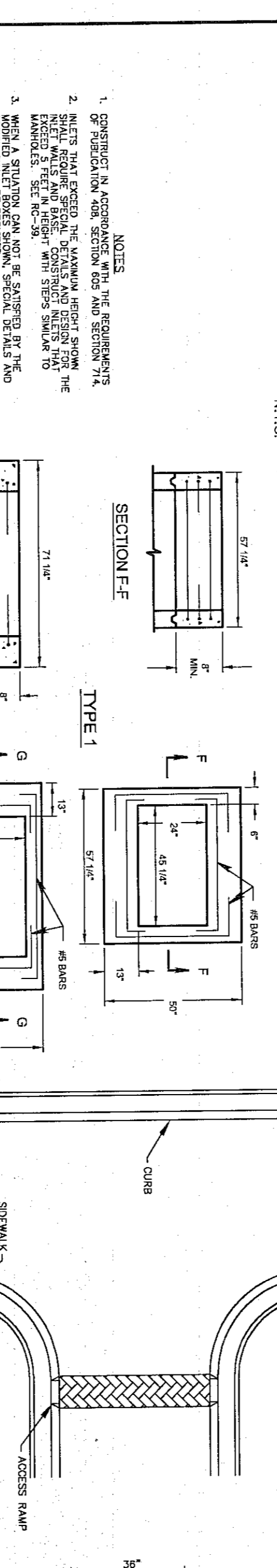
CONCRETE TOP UNIT
 TYPE C INLET
 N.T.S.

CONCRETE TOP UNIT
 TYPE M INLET
 N.T.S.

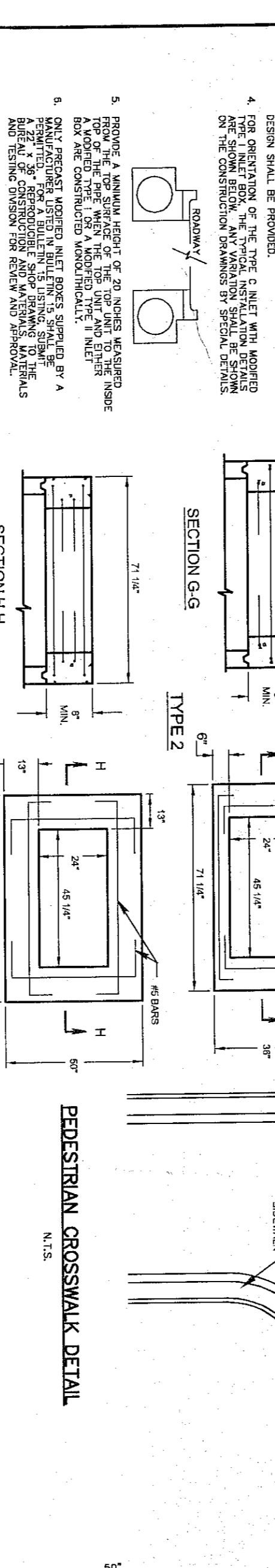


CONCRETE TOP UNIT
 TYPE C INLET
 N.T.S.

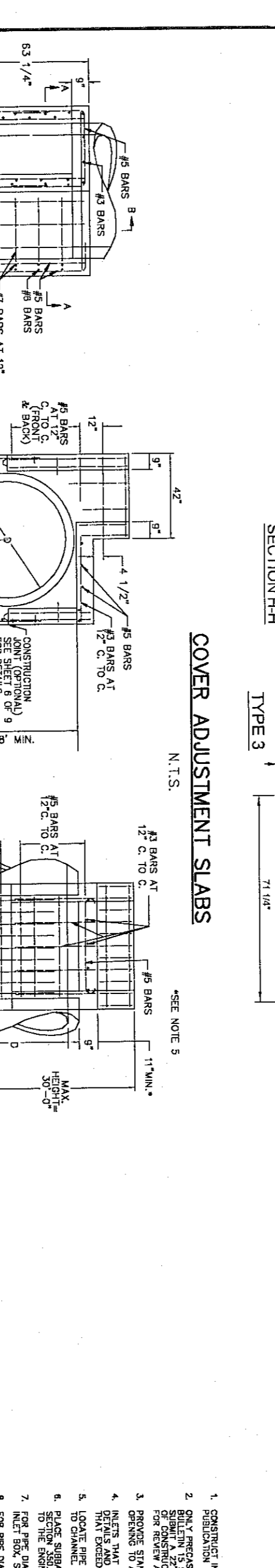
CONCRETE TOP UNIT
 TYPE M INLET
 N.T.S.



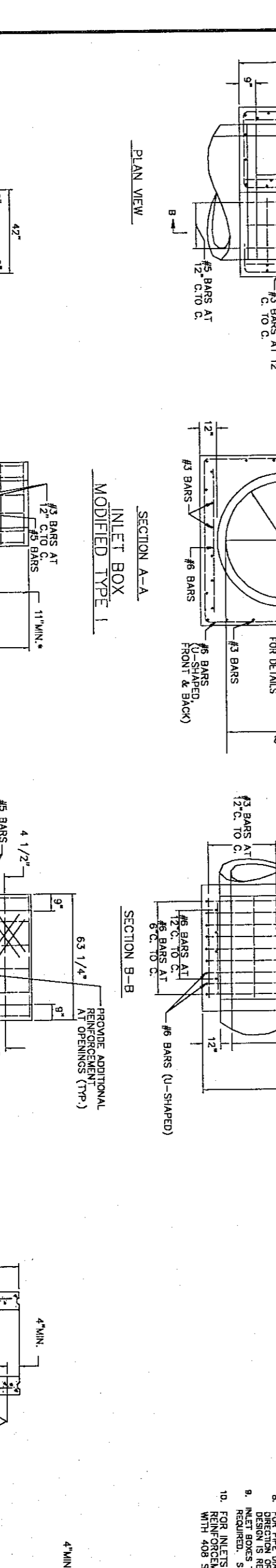
STORM SEWER PIPE TRENCH DETAIL
 N.T.S.



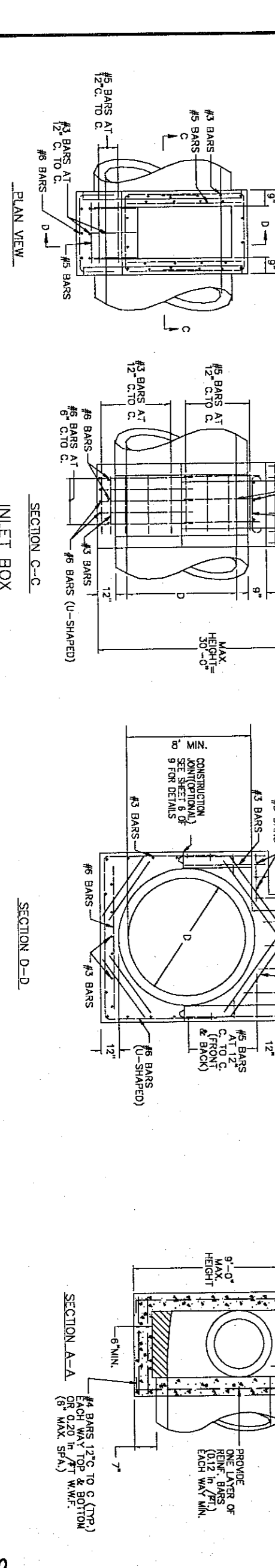
PEDESTRIAN CROSSWALK DETAIL
 N.T.S.



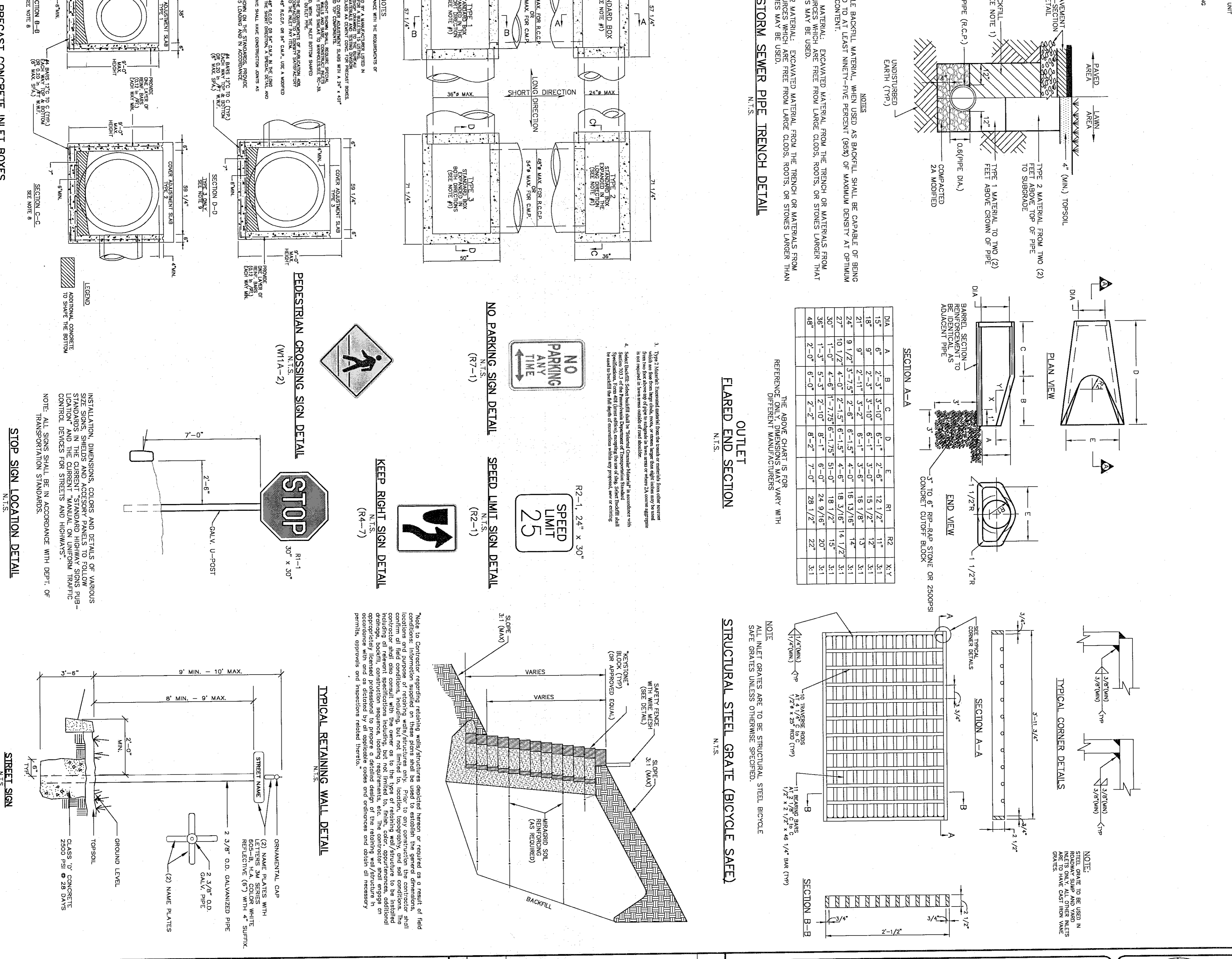
COVER ADJUSTMENT SLABS
 N.T.S.



STANDARD PRECAST CONCRETE INLET BOXES
 N.T.S.



PEDESTRIAN CROSSING SIGN DETAIL
 N.T.S.



STRUCTURAL STEEL GRATE (BICYCLE SAFE)
 N.T.S.

REV.	DATE	DESCRIPTION	DRAWN
4	1/31/05	FINAL CONSTRUCTION DRAWINGS	MOD
3	8/04/04	AGENCY REVIEW LETTER DATED 7/29/04	MOD
2	7/21/04	AGENCY REVIEW LETTERS 6/29/2004, 6/30/2004	MOD
1	6/07/04	AGENCY REVIEW LETTERS; TOWNSHIP COMMENTS	PAB

CONSTRUCTION DETAILS

REGENCY AT PROVIDENCE
(a.k.a. FOGEL TRACT)

UPPER PROVIDENCE TWP., MONTGOMERY CO., PENNSYLVANIA

ESE EASTERN STATES ENGINEERS

CIVIL ENGINEERS - LAND SURVEYORS - LANDSCAPE ARCHIT

250 GIBLART ROAD
SUITE 201
HORSHAM, PA 19044
4-2050
3-5488