

TABLE A
BASE SLAB DIMENSIONS

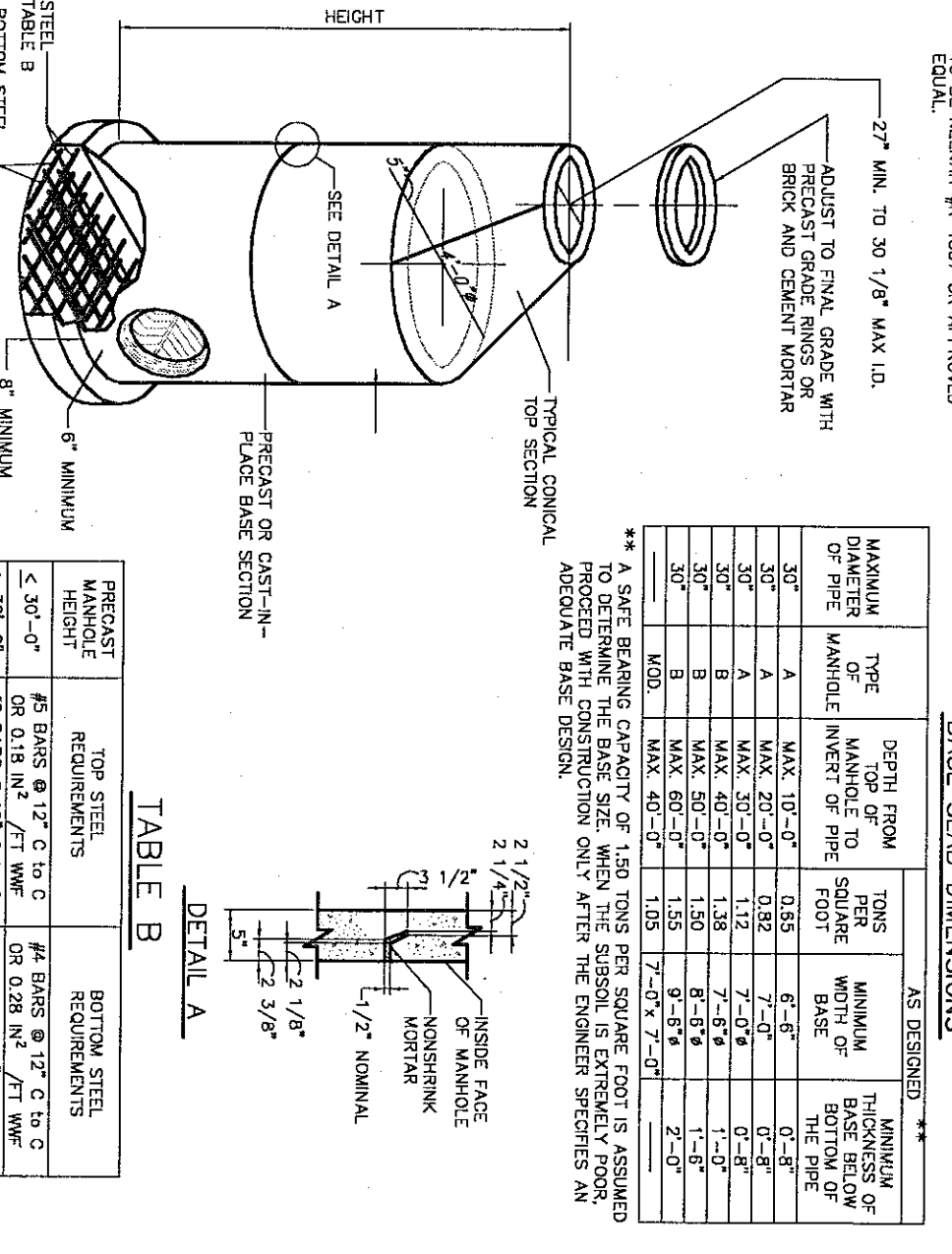
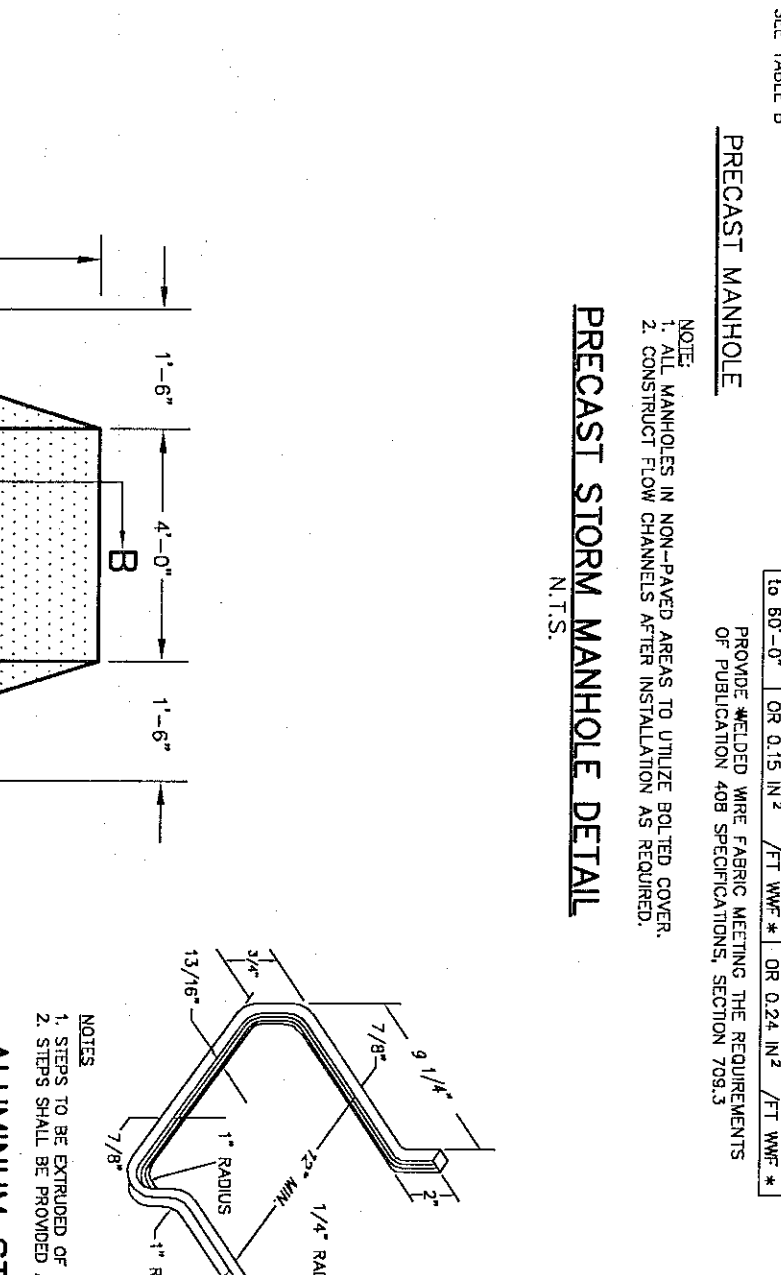
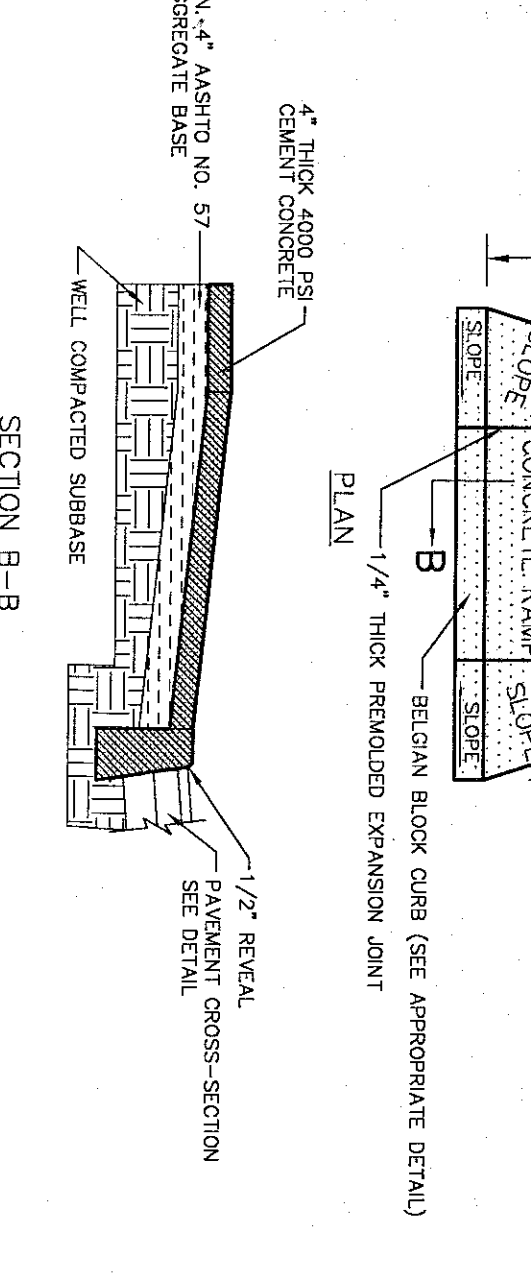
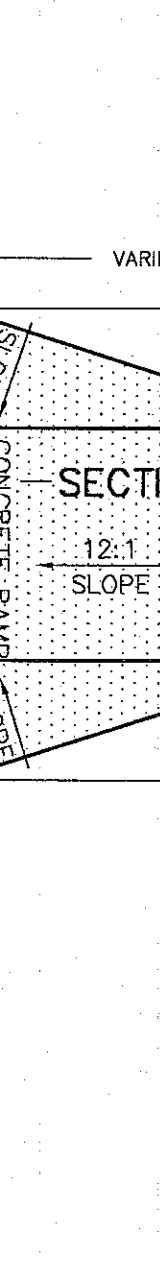


TABLE B
PRECAST STORM MANHOLE DETAIL

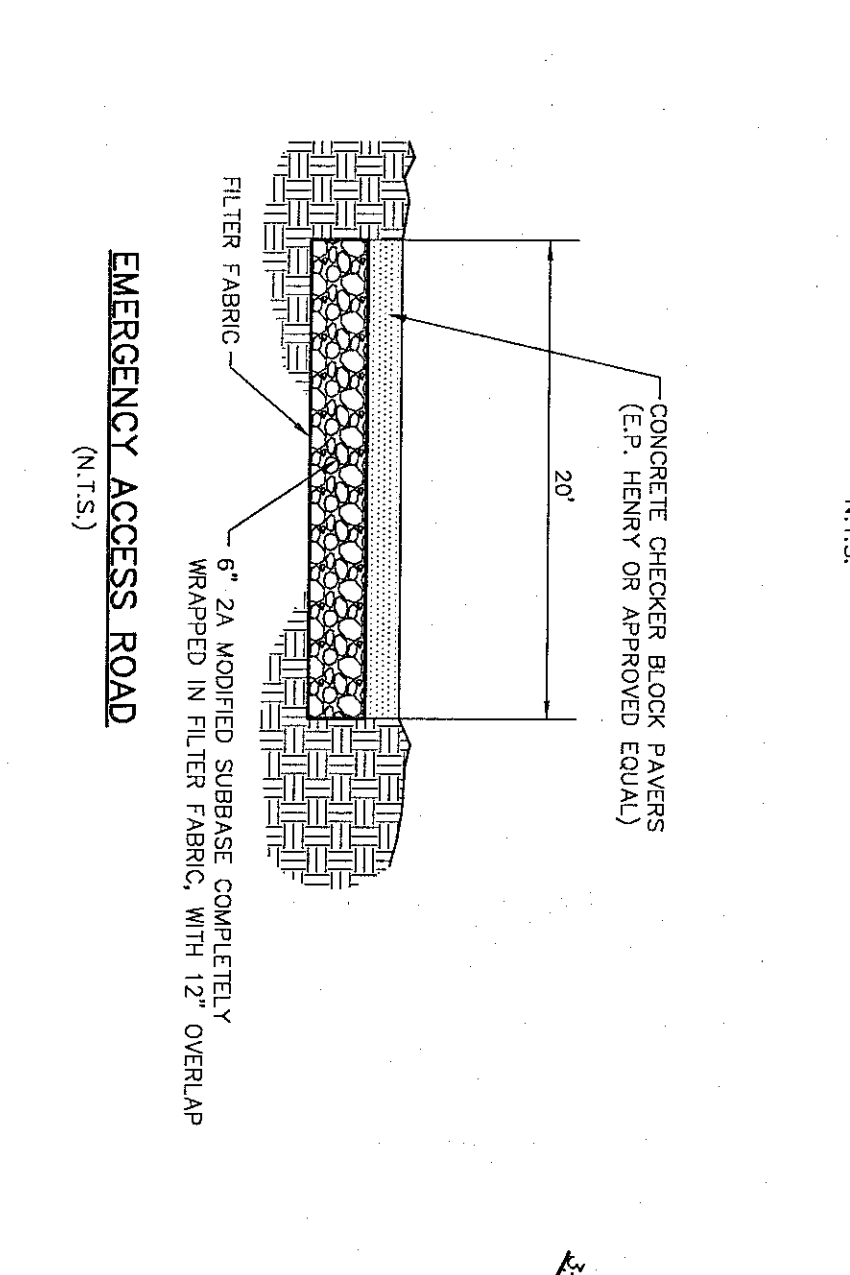


ALUMINUM STEEP

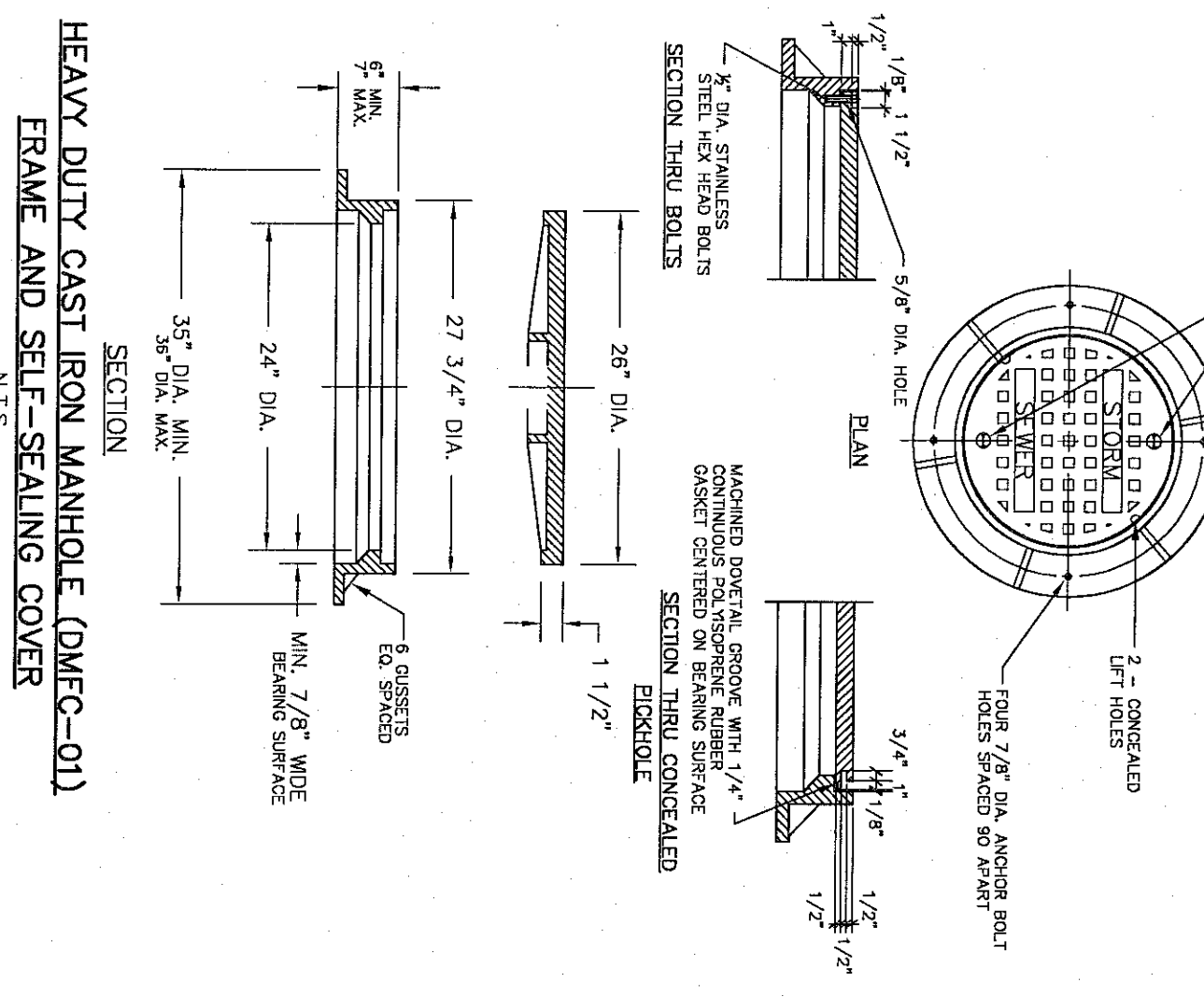


NOTES

- MATERIAL AND CONSTRUCTION SHALL MEET THE REQUIREMENTS OF THE MOST CURRENT APPLICABLE ADA REQUIREMENTS.
- PROVIDE 1/2\"/>



ACCEPTABLE FILL MATERIALS
STORMTECH SC-310 AND SC-740 CHAMBER SYSTEMS



MATERIAL LOCATION	DESCRIPTION	ASTM NO. DESIGNATION	ASTM CLASS DESIGNATION	COMPACTION REQUIREMENTS	TEST METHODS
1) FILL MATERIAL BELOW CHAMBERS	ANY SOIL ROCK MATERIALS WITH CHECK PLANS FOR PAVEMENT SUBGRADE REQUIREMENTS.	NA	NA	PREPARE PER REQUIREMENTS AND PAVEMENT INSTALLATION PER ENGINEER'S PLAN AND PREPARATION REQUIREMENTS.	2008
2) FILL MATERIAL FOR TOP OF CHAMBERS	GRAVEL OR GRANULAR FILL WITH 1/2\"/>	A-1 A-2 A-3 A-4 A-5 A-6 A-7 A-8 A-9 A-10 A-11 A-12	A-1 A-2 A-3 A-4 A-5 A-6 A-7 A-8 A-9 A-10 A-11 A-12	COMPACT IN PLACE TO A MINIMUM 95% STANDARD PROCTOR DENSITY. PREPARE PER REQUIREMENTS AND PAVEMENT INSTALLATION PER ENGINEER'S PLAN AND PREPARATION REQUIREMENTS.	2008
3) FOUNDATION BELOW CHAMBERS	WASHED ANGULAR STONE WITH THE MAJORITY OF PARTICLES BETWEEN 3/4\"/>	NA	NA	NO COMPACTION REQUIRED	2008
4) BEDDING BELOW CHAMBERS	WASHED ANGULAR STONE WITH THE MAJORITY OF PARTICLES BETWEEN 1/2\"/>	NA	NA	NO COMPACTION REQUIRED	2008

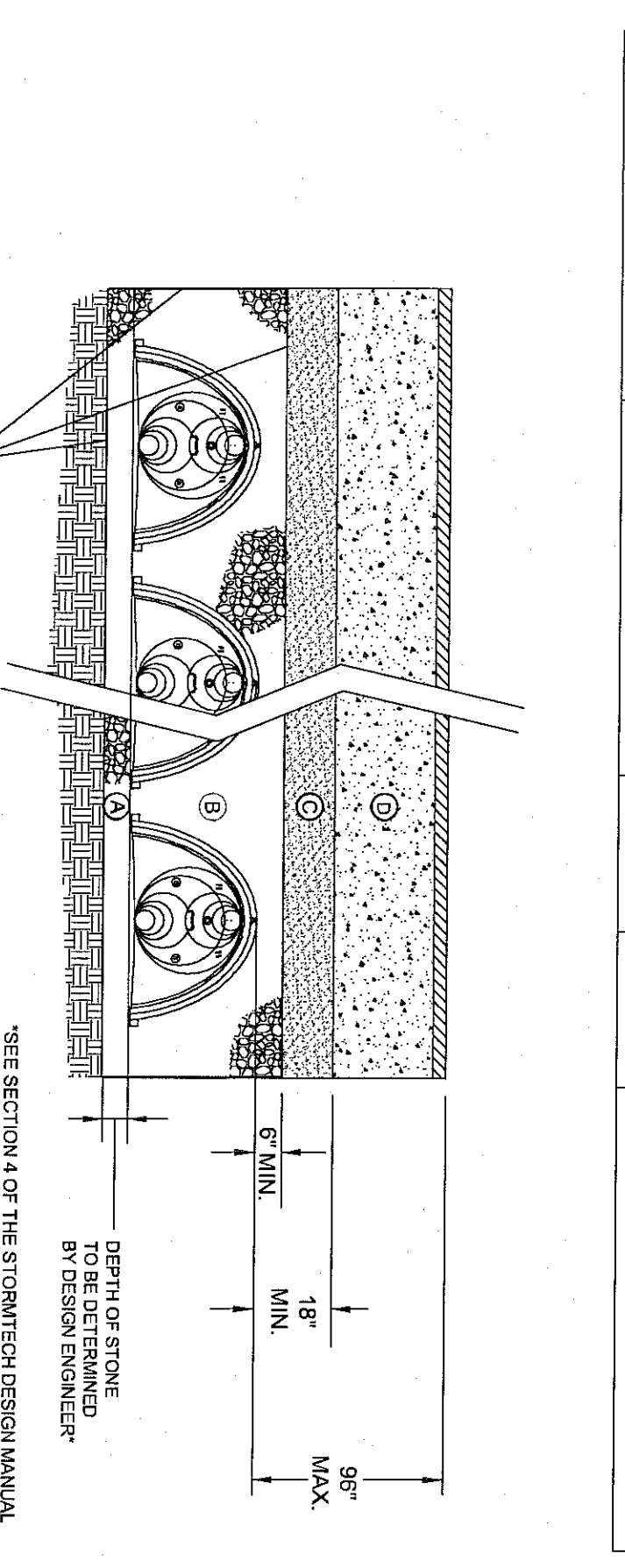
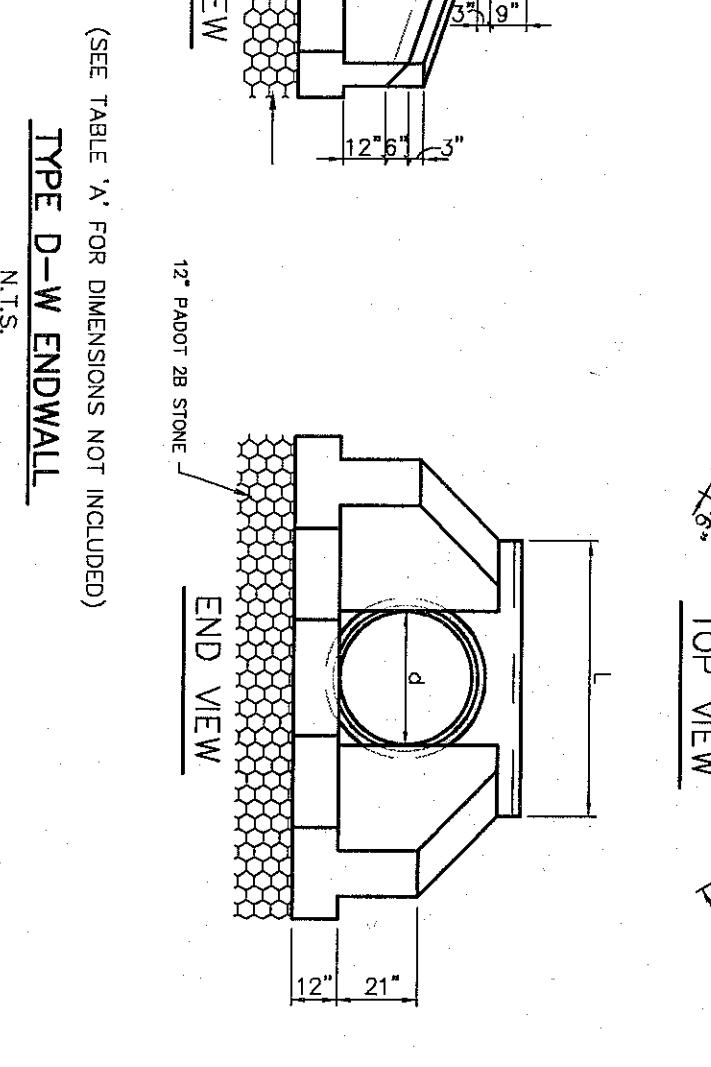
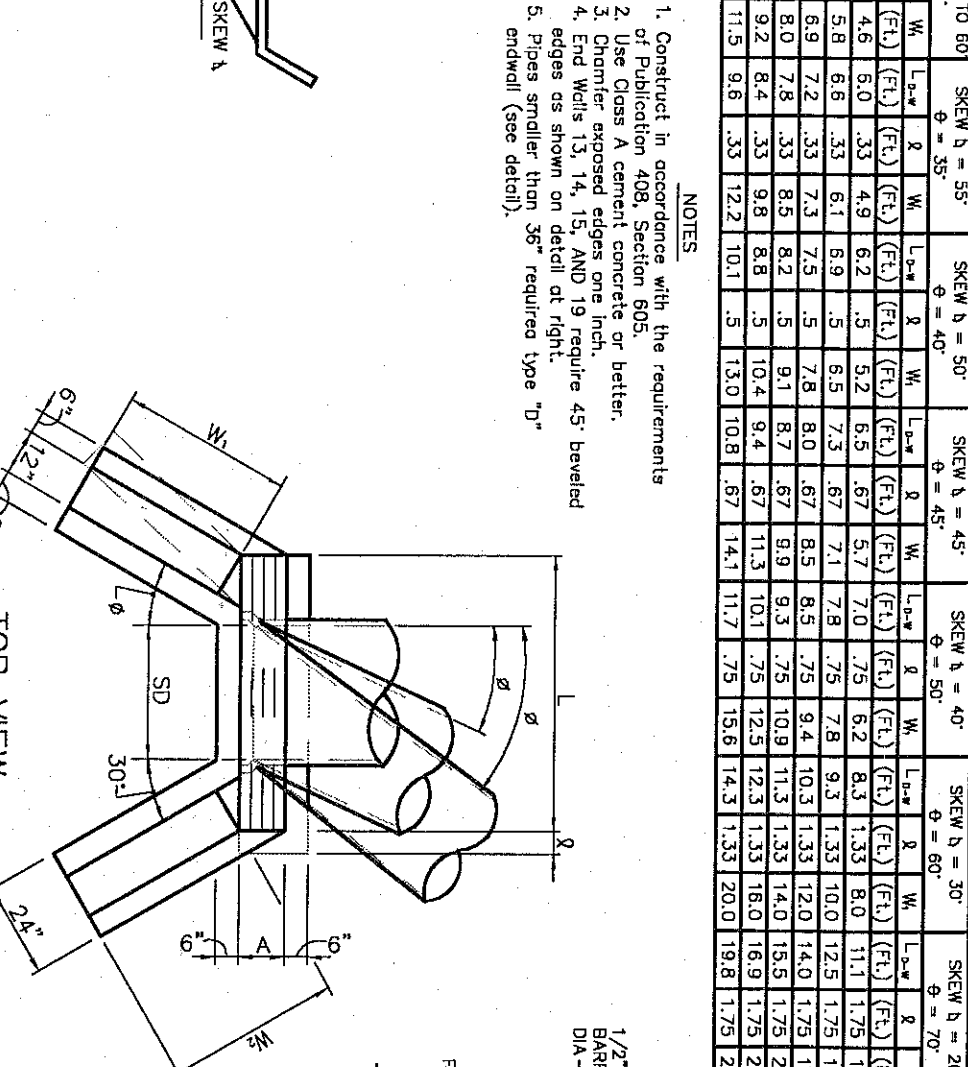


TABLE A
STORMTECH SC-740 CHAMBER

DESIGN FOR MAX. 21 STORIES (USED)

NORMAL CHAMBER SPECIFICATIONS: 66\"/>

CHAMBER NO.	CHAMBER TYPE	CHAMBER DIA.	CHAMBER HGT.	CHAMBER VOL.	CHAMBER WGT.	CHAMBER SETBACK	CHAMBER SETBACK DIA.	CHAMBER SETBACK HGT.	CHAMBER SETBACK VOL.	CHAMBER SETBACK WGT.
201	SC-740	36"	24"	2.51	110	12"	42"	12"	4.71	200
202	SC-740	36"	30"	3.14	135	12"	48"	12"	5.89	240
203	SC-740	36"	36"	3.82	160	12"	54"	12"	7.06	280
204	SC-740	36"	42"	4.51	185	12"	60"	12"	8.23	320
205	SC-740	36"	48"	5.20	210	12"	66"	12"	9.40	360
206	SC-740	36"	54"	5.89	235	12"	72"	12"	10.57	400
207	SC-740	36"	60"	6.58	260	12"	78"	12"	11.74	440
208	SC-740	36"	66"	7.27	285	12"	84"	12"	12.91	480
209	SC-740	36"	72"	7.96	310	12"	90"	12"	14.08	520
210	SC-740	36"	78"	8.65	335	12"	96"	12"	15.25	560
211	SC-740	36"	84"	9.34	360	12"	102"	12"	16.42	600
212	SC-740	36"	90"	10.03	385	12"	108"	12"	17.59	640
213	SC-740	36"	96"	10.72	410	12"	114"	12"	18.76	680
214	SC-740	36"	102"	11.41	435	12"	120"	12"	19.93	720
215	SC-740	36"	108"	12.10	460	12"	126"	12"	21.10	760
216	SC-740	36"	114"	12.79	485	12"	132"	12"	22.27	800
217	SC-740	36"	120"	13.48	510	12"	138"	12"	23.44	840
218	SC-740	36"	126"	14.17	535	12"	144"	12"	24.61	880
219	SC-740	36"	132"	14.86	560	12"	150"	12"	25.78	920
220	SC-740	36"	138"	15.55	585	12"	156"	12"	26.95	960
221	SC-740	36"	144"	16.24	610	12"	162"	12"	28.12	1000
222	SC-740	36"	150"	16.93	635	12"	168"	12"	29.29	1040

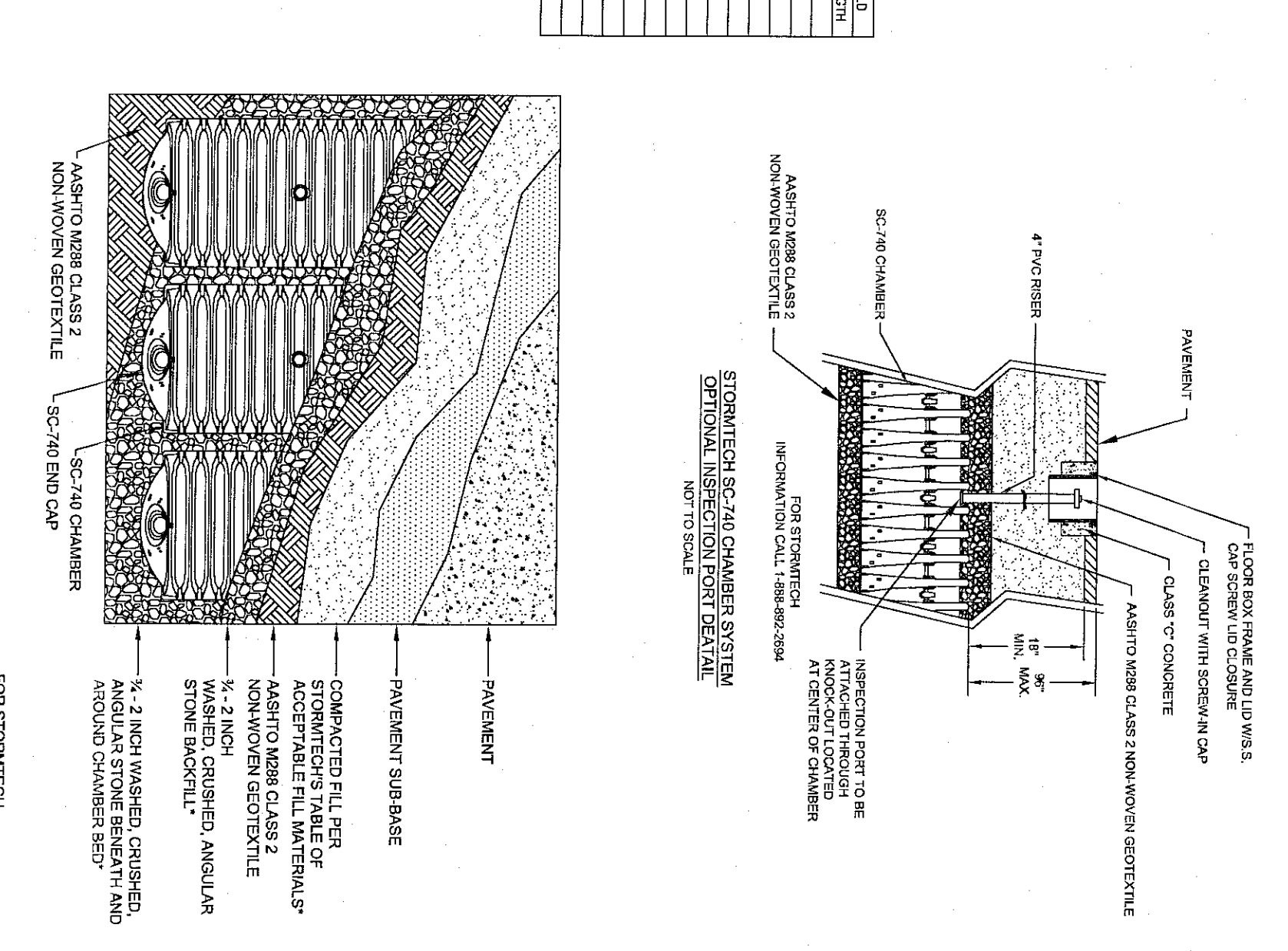


STORMTECH GENERAL NOTES

- STORMTECH CHAMBERS ARE DESIGNED TO CONFORM TO THE FOLLOWING STANDARDS: INTERNATIONAL STANDARDIZATION ORGANIZATION (ISO) 15848 FOR CAST IRON MANHOLES AND ACCESSORIES; ASTM A152 FOR CAST IRON MANHOLES; AND ASTM A153 FOR CAST IRON MANHOLES AND ACCESSORIES.
- STORMTECH CHAMBERS ARE DESIGNED TO CONFORM TO THE FOLLOWING STANDARDS: ASTM A152 FOR CAST IRON MANHOLES; AND ASTM A153 FOR CAST IRON MANHOLES AND ACCESSORIES.
- STORMTECH CHAMBERS ARE DESIGNED TO CONFORM TO THE FOLLOWING STANDARDS: ASTM A152 FOR CAST IRON MANHOLES; AND ASTM A153 FOR CAST IRON MANHOLES AND ACCESSORIES.
- STORMTECH CHAMBERS ARE DESIGNED TO CONFORM TO THE FOLLOWING STANDARDS: ASTM A152 FOR CAST IRON MANHOLES; AND ASTM A153 FOR CAST IRON MANHOLES AND ACCESSORIES.
- STORMTECH CHAMBERS ARE DESIGNED TO CONFORM TO THE FOLLOWING STANDARDS: ASTM A152 FOR CAST IRON MANHOLES; AND ASTM A153 FOR CAST IRON MANHOLES AND ACCESSORIES.
- STORMTECH CHAMBERS ARE DESIGNED TO CONFORM TO THE FOLLOWING STANDARDS: ASTM A152 FOR CAST IRON MANHOLES; AND ASTM A153 FOR CAST IRON MANHOLES AND ACCESSORIES.
- STORMTECH CHAMBERS ARE DESIGNED TO CONFORM TO THE FOLLOWING STANDARDS: ASTM A152 FOR CAST IRON MANHOLES; AND ASTM A153 FOR CAST IRON MANHOLES AND ACCESSORIES.
- STORMTECH CHAMBERS ARE DESIGNED TO CONFORM TO THE FOLLOWING STANDARDS: ASTM A152 FOR CAST IRON MANHOLES; AND ASTM A153 FOR CAST IRON MANHOLES AND ACCESSORIES.
- STORMTECH CHAMBERS ARE DESIGNED TO CONFORM TO THE FOLLOWING STANDARDS: ASTM A152 FOR CAST IRON MANHOLES; AND ASTM A153 FOR CAST IRON MANHOLES AND ACCESSORIES.
- STORMTECH CHAMBERS ARE DESIGNED TO CONFORM TO THE FOLLOWING STANDARDS: ASTM A152 FOR CAST IRON MANHOLES; AND ASTM A153 FOR CAST IRON MANHOLES AND ACCESSORIES.

STORMTECH PRODUCT SPECIFICATIONS

- STORMTECH CHAMBERS ARE DESIGNED TO CONFORM TO THE FOLLOWING STANDARDS: INTERNATIONAL STANDARDIZATION ORGANIZATION (ISO) 15848 FOR CAST IRON MANHOLES AND ACCESSORIES; ASTM A152 FOR CAST IRON MANHOLES; AND ASTM A153 FOR CAST IRON MANHOLES AND ACCESSORIES.
- STORMTECH CHAMBERS ARE DESIGNED TO CONFORM TO THE FOLLOWING STANDARDS: ASTM A152 FOR CAST IRON MANHOLES; AND ASTM A153 FOR CAST IRON MANHOLES AND ACCESSORIES.
- STORMTECH CHAMBERS ARE DESIGNED TO CONFORM TO THE FOLLOWING STANDARDS: ASTM A152 FOR CAST IRON MANHOLES; AND ASTM A153 FOR CAST IRON MANHOLES AND ACCESSORIES.
- STORMTECH CHAMBERS ARE DESIGNED TO CONFORM TO THE FOLLOWING STANDARDS: ASTM A152 FOR CAST IRON MANHOLES; AND ASTM A153 FOR CAST IRON MANHOLES AND ACCESSORIES.
- STORMTECH CHAMBERS ARE DESIGNED TO CONFORM TO THE FOLLOWING STANDARDS: ASTM A152 FOR CAST IRON MANHOLES; AND ASTM A153 FOR CAST IRON MANHOLES AND ACCESSORIES.
- STORMTECH CHAMBERS ARE DESIGNED TO CONFORM TO THE FOLLOWING STANDARDS: ASTM A152 FOR CAST IRON MANHOLES; AND ASTM A153 FOR CAST IRON MANHOLES AND ACCESSORIES.
- STORMTECH CHAMBERS ARE DESIGNED TO CONFORM TO THE FOLLOWING STANDARDS: ASTM A152 FOR CAST IRON MANHOLES; AND ASTM A153 FOR CAST IRON MANHOLES AND ACCESSORIES.
- STORMTECH CHAMBERS ARE DESIGNED TO CONFORM TO THE FOLLOWING STANDARDS: ASTM A152 FOR CAST IRON MANHOLES; AND ASTM A153 FOR CAST IRON MANHOLES AND ACCESSORIES.
- STORMTECH CHAMBERS ARE DESIGNED TO CONFORM TO THE FOLLOWING STANDARDS: ASTM A152 FOR CAST IRON MANHOLES; AND ASTM A153 FOR CAST IRON MANHOLES AND ACCESSORIES.
- STORMTECH CHAMBERS ARE DESIGNED TO CONFORM TO THE FOLLOWING STANDARDS: ASTM A152 FOR CAST IRON MANHOLES; AND ASTM A153 FOR CAST IRON MANHOLES AND ACCESSORIES.



CONSTRUCTION DETAILS

REGENCY AT PROVIDENCE (a.k.a. FOGEL TRACT)

UPPER PROVIDENCE TWP., MONTGOMERY CO., PENNSYLVANIA

NO.	DATE	DESCRIPTION	DRAWN	BY
1	6/07/04	AGENCY REVIEW LETTERS; TOWNSHIP COMMENTS	PAB	
2	7/21/04	AGENCY REVIEW LETTERS DATED 7/29/04	MDD	
3	8/04/04	AGENCY REVIEW LETTER DATED 7/29/04	MDD	
4	1/31/05	FINAL CONSTRUCTION DRAWINGS	MDD	

ESE EASTERN STATES ENGINEERING
CIVIL ENGINEERS - LAND SURVEYORS

250 GIBLARTAR ROAD
SUITE 2E
HORSHAM, PA 19044
TEL: (215) 914-2050
FAX: (215) 293-5488

JAMES D. TAKACS
REGISTERED PROFESSIONAL ENGINEER
NO. 061108
STATE OF PENNSYLVANIA

James Takacs

SHEET **46** OF **78**
DATE: 6/1/04
JOB NO.: 1114
DRAWN: THS
SCALE: AS NOTED
FILE NAME: SC-DE-C03