

POST-DEVELOPED  
BYPASS 4  
AREA = 1.19 AC.  
RUNOFF 'C' = 0.41  
Tc = 0.0833 HR.

POST-DEVELOPED  
SHED 1  
AREA = 0.69 AC.  
RUNOFF 'C' = 0.39  
Tc = 0.0833 HR.

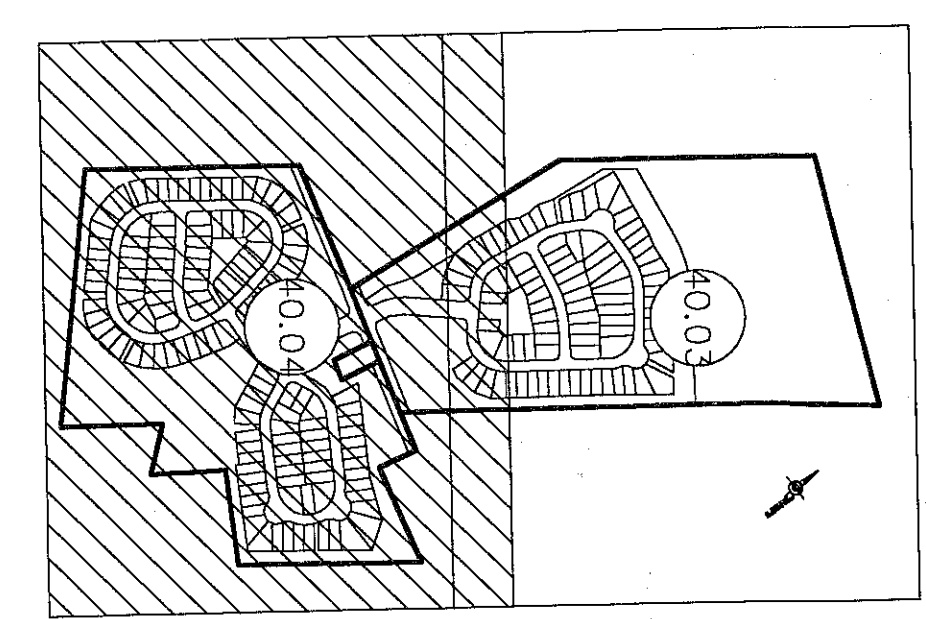
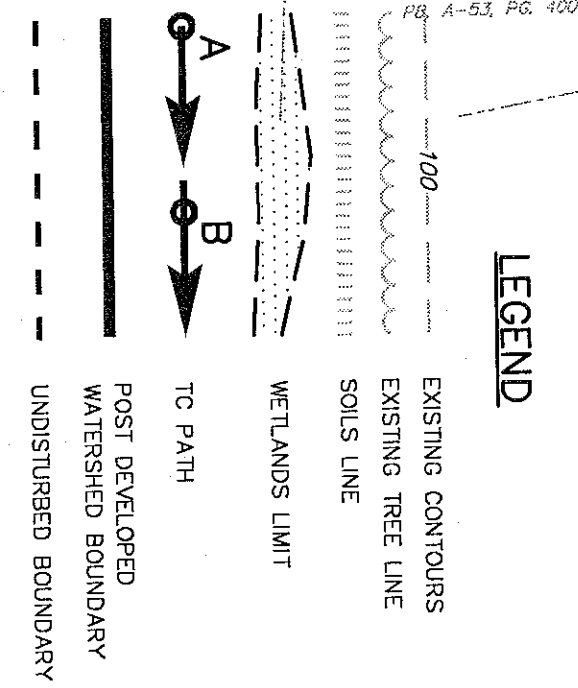
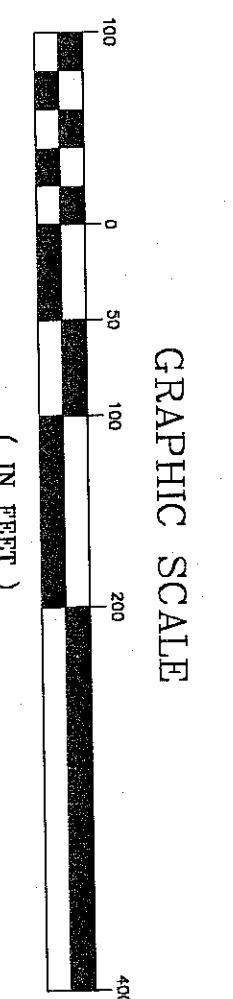
POST-DEVELOPED  
SHED 3  
AREA = 17.28 AC.  
RUNOFF 'C' = 0.58  
Tc = 0.0833 HR.

POST-DEVELOPED  
BYPASS 3  
AREA = 8.02 AC.  
RUNOFF 'C' = 0.38  
Tc = 0.0833 HR.

POST-DEVELOPED  
BYPASS 6  
AREA = 2.85 AC.  
RUNOFF 'C' = 0.27  
Tc = 0.0833 HR.

POST-DEVELOPED  
BYPASS 7  
AREA = 1.37 AC.  
RUNOFF 'C' = 0.34  
Tc = 0.0833 HR.

POST-DEVELOPED  
BYPASS 5  
AREA = 1.32 AC.  
RUNOFF 'C' = 0.28  
Tc = 0.0833 HR.



POST-DEVELOPED DRAINAGE AREA AND POST CONSTRUCTION STORMWATER MANAGEMENT PLANS  
**REGENCY AT PROVIDENCE**  
(a.k.a. FOGEL TRACT)  
UPPER PROVIDENCE TWP., MONTGOMERY CO., PENNSYLVANIA

DATE	12/8/03	SCALE	1" = 100'
DESIGNER	JT	DRAWN	PAB
CDS NO.	1114	TITLE NUMBER	S-DR-POST
REV.	DR40.04		
SHEET	76	OF	78

REV.	DATE	DESCRIPTION	DRAWN
5	1/31/05	FINAL CONSTRUCTION DRAWINGS	MDD
4	11/22/04	REVIEW LETTER 9/28/04; RDS. A, B, D COMM CTR	MDD
3	8/04/04	AGENCY REVIEW LETTER DATED 7/29/04	MDD
2	7/21/04	AGENCY REVIEW LETTERS 6/29/2004, 6/30/2004	MDD
1	6/07/04	AGENCY REVIEW LETTERS; TOWNSHIP COMMENTS	PAB

**ESE EASTERN STATES ENGINEERING**  
250 GIBRALTAR ROAD SUITE 2E  
HORSHAM, PA 19044  
TEL: (215) 914-2050  
FAX: (215) 293-5488

CIVIL ENGINEERS - LAND SURVEYORS - LANDSCAPE ARCHITECTS - LAND PLANNERS

PROFESSIONAL ENGINEER  
JAMES D. TAKACS  
ENGINEER IN CHARGE  
PENNSYLVANIA

*James Takacs*